

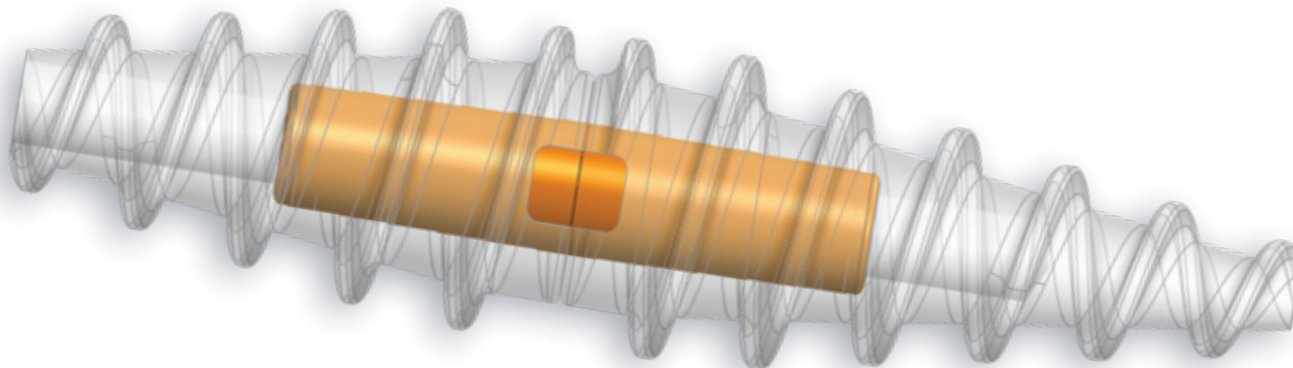


ToeMATE®

Hammertoe Correction System



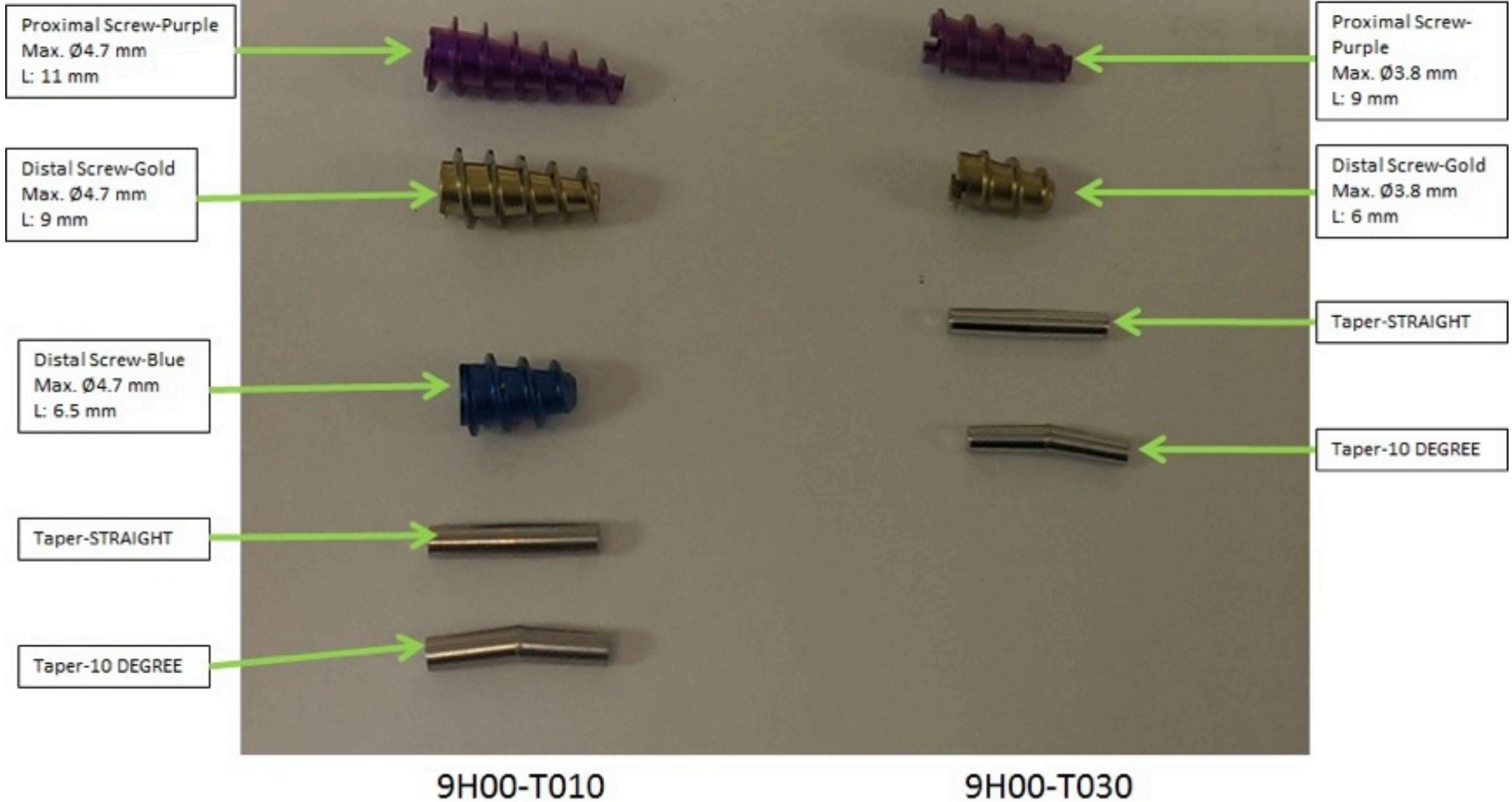
The ToeMATE system includes sterile implants & instrumentation that provide stability and accurate device placement.



# Implant Sizes

LARGE IMPLANT PACKAGE

SMALL IMPLANT PACKAGE



# Packaging

**ALL COMPONENTS PROVIDED STERILE**

## Instrument Package (LARGE)

---

9H00-T020	Drill Screw Driver (Bone White) Thimble
-----------	---

---

## Instrument Package (SMALL)

---

9H00-T040	Drill Screw Driver (Blue) Thimble
-----------	---

---

## Implant Package (LARGE - Ø 4.7mm)

---

9H00-T010	Screw, Proximal (Purple), L: 11mm Screw, Distal (Gold), L: 9mm Screw, Distal (Blue), L: 6.5mm Taper Lock Pin (0° & 10°) Transfer Guide Pin Delivery Tool (Bone White) Trepine
-----------	---

---

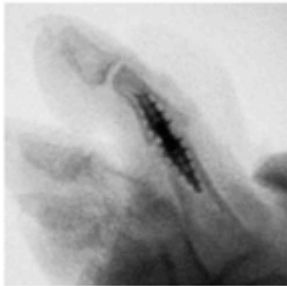
## Implant Package (SMALL - Ø 3.8mm)

---

9H00-T030	Screw, Proximal (Purple), L: 9mm Screw, Distal (Gold), L: 7mm Taper Lock Pin (0° & 10°) Transfer Guide Pin Delivery Tool (Blue) Trepine
-----------	--

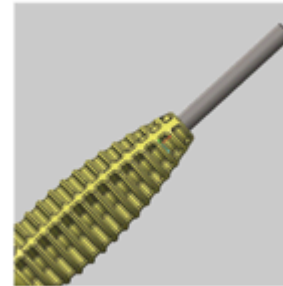
---

1



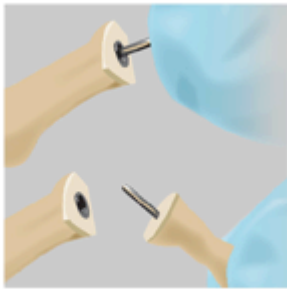
Implant components completely embedded in the phalangeal bones i.e. no implant exposure post-op avoids complications associated with pin tract infection.

4



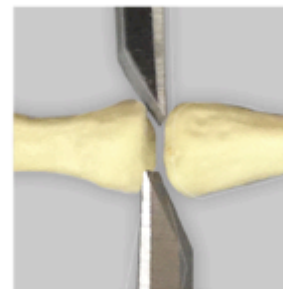
All instruments hand driven. No power tools or connection required.

2



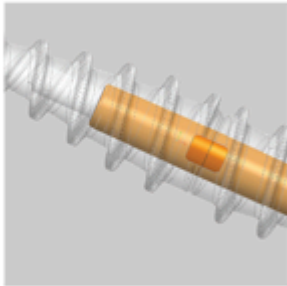
Transfer guide pins available in 0° or 10° angles provide accurate placement of distal screw for proper alignment.

5



Easy to separate and remove implant components in case of revisions.

3



Small & large tapered screws with a conical design & morse taper lock provide maximum grip & strong construct fixation.

6



All implants and instruments provided in a complete, sterile disposable kit. This eliminates missing instruments, incomplete trays and minimizes the risk of infection.



# Surgical Technique

## DEVICE IMPLANTATION IN A CADAVER SPECIMEN



Exposure/Joint Resection



Pilot Hole Creation-Prox. Ph.



Proximal Screw Placement



Pilot Hole Creation-Dist. Ph.



Distal Screw Placed + Taper Lock  
Pin Placed in Prox. Screw



Thimble Used For Final Implant  
Placement



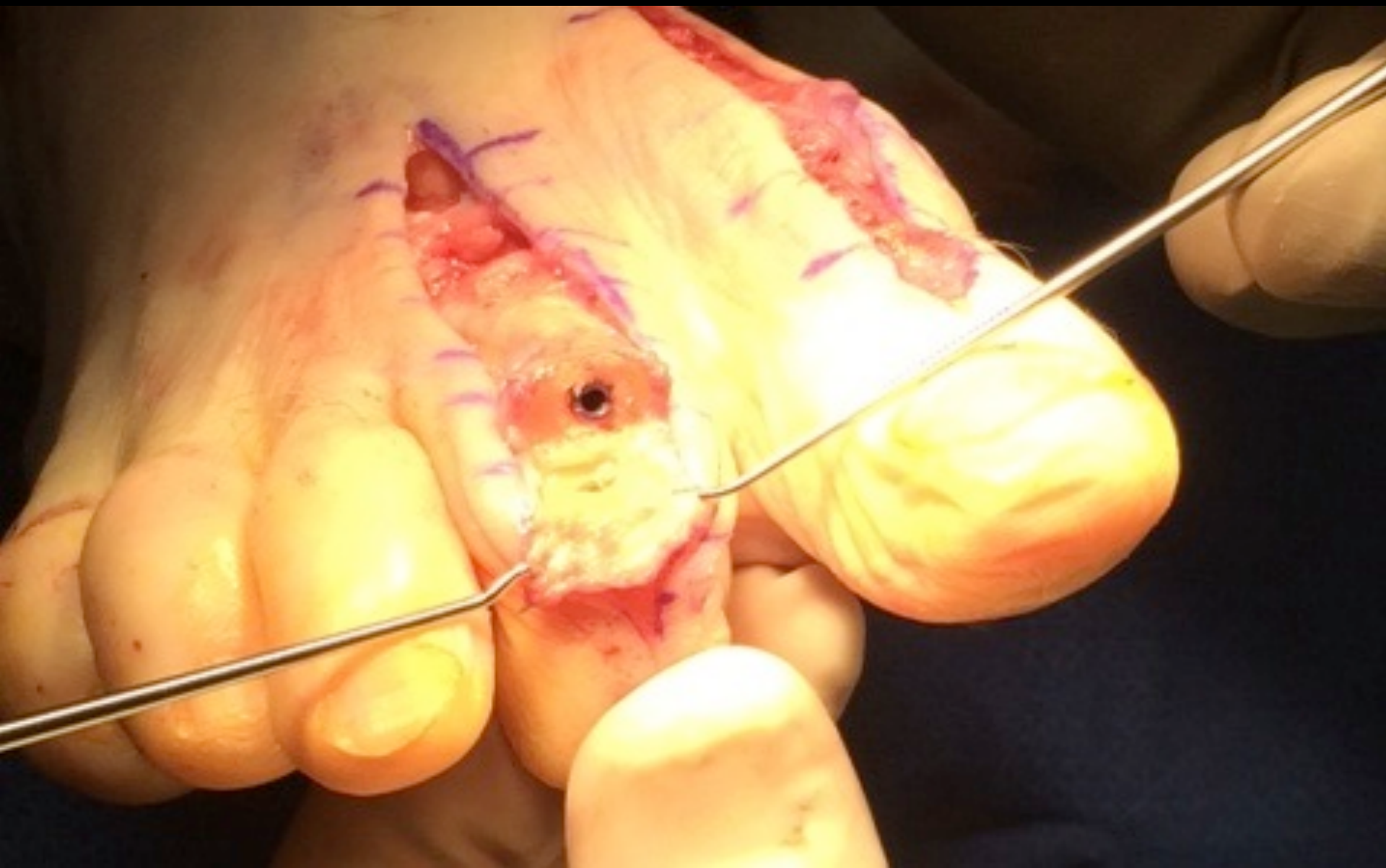
Patient Preoperative



Patient Postoperative

















DBSC

13.12.04

13.18







16  
BROYZMAN  
KNOE SURG

44 ☉  
29 ◐

0.1 min  
0.00 mR/min  
26.31 mrad

OEC







rihC

14.05.21

15.11

