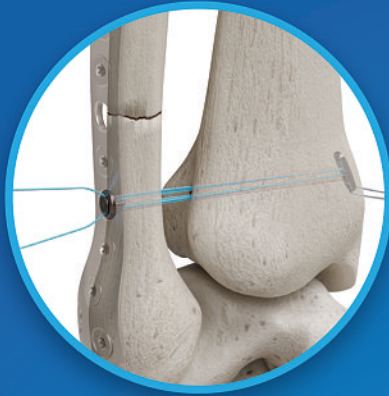




conventus
FLOWER



READY-FOR-SURGERY™
PRODUCT CATALOG

WE BUILD A MORE EFFICIENT CASE

Conventus Flower Orthopedics is the leader in Ready-for-Surgery™ bone fixation. We deliver efficiencies throughout the supply chain that reduce the overall cost of care.

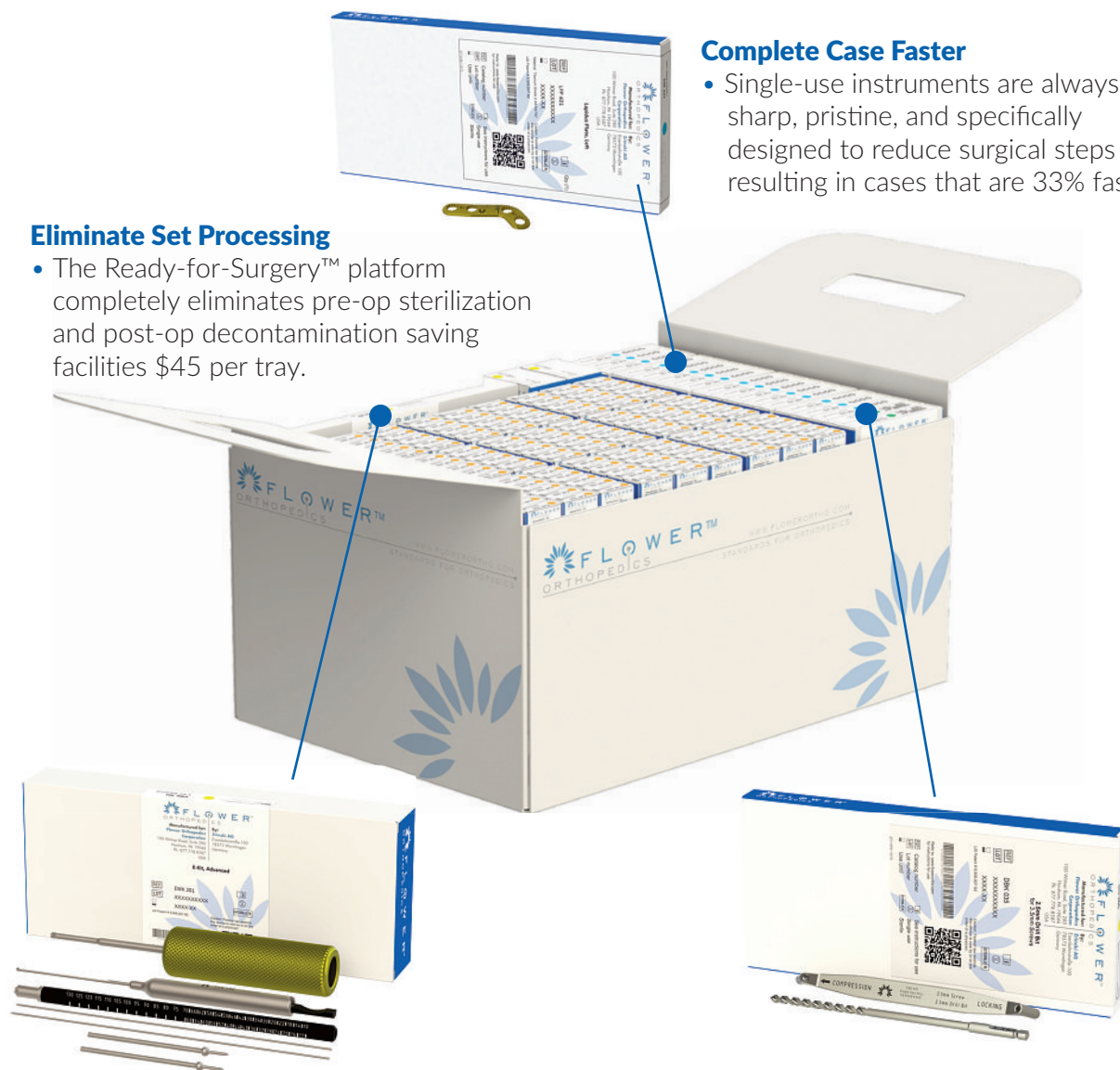
Designed for specific surgical indications, the FlowerCube™ contains all of the implants and instruments required for a case. All products are sterile-packaged, single-use and always Ready-for-Surgery™.

Eliminate Set Processing

- The Ready-for-Surgery™ platform completely eliminates pre-op sterilization and post-op decontamination saving facilities \$45 per tray.

Complete Case Faster

- Single-use instruments are always sharp, pristine, and specifically designed to reduce surgical steps resulting in cases that are 33% faster.



Decrease Infection Risk

- Individually packaged instruments are always sterile, reducing infection potential.

Reduce OR Turn Over Time

- Complete several back-to-back cases from one FlowerCube™.

THE FLOWERCUBE™

CONTENTS

FlowerCube™ Concept	3
Anatomy of the FlowerCube™	4
Flower Implant Portfolio	5
Ready-for-Surgery™ Instrumentation	6
Snap-Fix Screws	9
Forefoot FlowerCube™	12
First Ray FlowerCube™	14
Midfoot FlowerCube™	16
FlowerGraft™ FlowerCube™	18
Fibula FlowerCube™	19
Tibia FlowerCube™	21
Calcaneus FlowerCube™	23
Jones Screw FlowerCube™	25
Cannulated Screw FlowerCubes™	26
FlowerToe™ FlowerCube™	29
Hand FlowerCube™	30
Distal Radius FlowerCube™	32
Flower Allografts	33
FlowerCart™	34
Flex-Thread™ Distal Fibula Nail	35
Surgical Efficiency Study	45
Product List	46

FLOWERCUBE™ CONCEPT

Conventus Flower Orthopedics is the innovator of the FlowerCube™, a complete indication-based bone fixation platform. Designed for specific surgical procedures the FlowerCube™ contains all of the implants and instruments required for a case. All products are sterile-packaged, single-use and always Ready-for-Surgery™ eliminating pre-operative, on-site sterilization and post-op cleaning and decontamination.

Conventus Flower Orthopedics offers a variety of indication and procedure based FlowerCube™ configurations for upper and lower extremity applications. In addition to standard configurations, FlowerCubes™ are fully customizable. The next generation of FlowerCubes™ will be procedure specific and offer multiple solutions for the most common foot & ankle procedures.

The FlowerCube™ and FlowerCarriage™

FlowerCarriage™

The FlowerCarriage is made out of sturdy medical grade laminate and can be easily carried in and out of the OR.



FlowerCube™

The FlowerCubes™ are delivered in secure hard plastic shipping containers, providing protection for the FlowerCarriage™ inside.

The outer container is ideal for transporting the FlowerCarriage between facilities.



ANATOMY OF THE FLOWERCUBE™

Flower Instrument Kits

Flower Instrument Kits include all instruments required for plate positioning and screw placement. Depending on the application, every kit contains a screwdriver (cannulated or solid), preliminary fixation devices (olive wires or K-wires) and a depth gauge (plating and/or cannulated). Each Instrument Kit is sterile, single-use and designed to reduce surgical steps.



Flower Trials

Sterile-packaged trials can be used to pinpoint the exact implant size prior to opening the sterile packaged implant and also function as a bending template.



Ancillary Instruments

Ancillary instruments including additional K-wires, plate benders and cup & cone reamer sets for MTP fusions are included in the FlowerCube™.



FlowerCarriage™

The FlowerCarriage is made out of sturdy medical grade laminate and can be easily carried in and out of the OR.



Drill Bit Kits

Drill Bit Kits and Lag Screw Kits are packaged with the appropriate drill guides. Cannulated and solid drill bits for all applicable screw diameters are included in the FlowerCube™. Drill Bits are always new, sharp and pristine.



Flower Plates

Each sterile-packaged, titanium plate is designed for a particular indication. Plates are visible in the package and each package includes QR and bar codes for lot traceability.



Flower Plating and Cannulated Screws

Flower Plating and Cannulated Screws are individually packaged and clearly marked by diameter and length. Each type of screw (cannulated, locking, nonlocking and compression) is color coded for simplified handling and easy recognition. Each package includes QR and bar codes for lot traceability.



IMPLANT PLATFORM

The Implant Portfolio was developed for the Ready-for-Surgery™ FlowerCube™, utilizing platform-based technology. Each implant works as a member of a small or medium platform, allowing for the standardization of instruments and implants within each platform and across the implant portfolio.

Plating Portfolio

The Plating Portfolio has two platforms differentiated by the range of screw diameters that work with each of the two locking mechanisms (FlowerGrooves™), **Small** and **Medium**. All screws within each platform have the same head size and therefore utilize the same screw driver and depth gauge instruments.



Small FlowerGroove™
Screw Diameters
1.5mm/2.0mm/2.4mm



Medium FlowerGroove™
Screw Diameters
2.7mm/3.0mm/3.5mm/4.0mm

The FlowerGroove™ accepts both locking and non-locking screw options. A wide variety of lengths are available to cover a range of clinical applications.

Variable Angle Locking Screw



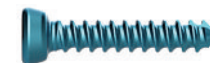
Variable Angle Locking Peg (Distal Radius)



Variable Angle Non-Locking Screw



Variable Angle Non-Locking Compression Screw



Cannulated & Headless Portfolio

The Flower Cannulated Screw Portfolio is available with Headed & Headless Cannulated Screws in 3 platforms, **Small**, **Medium** and **Large**. All screws within each platform utilize the same instruments, with the exception of drill bits, which are based on individual screw diameters.



Small Cannulated: 2.0mm/2.4mm
Medium Cannulated: 3.0mm/3.5mm/4.0mm/4.5mm
Large Cannulated: 5.5mm/6.5mm/7.3mm



Small Headless: 2.4mm/3.0mm*
Medium Headless: 3.0mm*/4.0mm
Large Headless: 5.0mm/6.5mm

* 3.0mm HCS lengths 10mm-20mm are found in the Small portfolio, lengths 20mm-60mm are found in the Medium portfolio

READY-FOR-SURGERY™ INSTRUMENTATION

The FlowerCube™ contains all of the requisite instruments for implanting a Flower Plate or Screw. All instruments are single-use, sterile and always Ready-for-Surgery™.

INSTRUMENT KITS:

Flower Instrument Kits are sized according to the implant platform with which they are used. Each Kit comprises of provisional fixation (olive wires, guide wires, or K-wires), Depth Gauge and Screwdriver

K-WIRE KITS (KWK 100 FOR SMALL PLATES)

The K-Wire Kit contains the instruments and K-Wires required for plate positioning and screw placement.



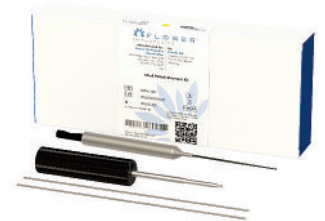
T6 Screwdriver



K-Wires (2)



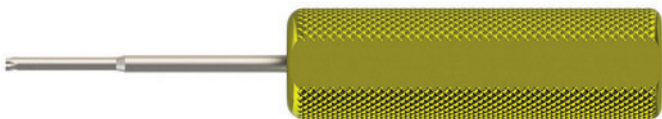
Plating Depth Gauge



PRODUCT NO.	KIT SIZE	SCREW DIAMETERS	CONTENTS OF KIT
KWK 100	S	2.0mm/2.4mm	T6 Screwdriver, Plating Depth Gauge, K-Wires (2)

OLIVE WIRE KIT ADVANCED (OWK 201 FOR MEDIUM PLATES)

The Olive Wire Kit contains the instruments and olive wires required for plate positioning and screw placement.



T15 Screwdriver



Olive Wires (2)



Plating Depth Gauge



PRODUCT NO.	KIT SIZE	SCREW DIAMETERS	CONTENTS OF KIT
OWK 201	M	2.7mm/3.0mm 3.5mm/4.0mm	T15 Screwdriver, Plating Depth Gauge, Olive Wires (2)

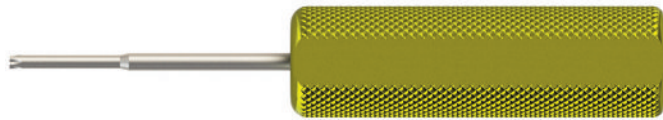
INSTRUMENT KITS (continued)

DISTAL RADIUS K-WIRE KIT ADVANCED (KWK 901)

The Distal Radius K-Wire Kit contains the instruments and K-Wires required for the distal radius plate placement.



T6 Screwdriver (for distal screws)



T15 Screwdriver (for proximal screws)



1.4mm K-Wires (4)

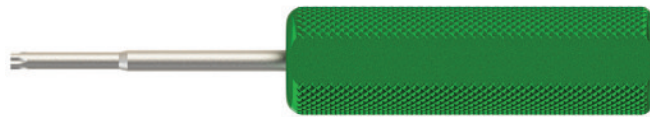


Hook Tip Probe (for use with Depth Measuring Drill Guide for easy screw length measurement)

PRODUCT NO.	KIT SIZE	SCREW DIAMETERS	CONTENTS OF KIT
KWK 901	S/M	2.4mm/3.5mm	T6 Screwdriver, T15 Screwdriver, Hook Tip Probe, 1.4mm K-Wires (4)

GUIDE WIRE KITS (GWK 100 - SMALL, GWK 200- MEDIUM, GWK 300 - LARGE)

The Guide Wire Kits contain all of the instruments required for Cannulated Screw insertion.



T25 Screwdriver



CoCr Guide Wires (2)



Cannulated Depth Gauge & Countersink

PRODUCT NO.	KIT SIZE	SCREW DIAMETERS	CONTENTS OF KIT
GWK 100	S	2.0mm/2.4mm	T6 Cannulated Screwdriver, Small Cannulated Depth Gauge & Countersink, 0.8mm CoCr Guide Wires (2)
GWK 200	M	3.0mm/3.5mm/4.0mm/4.5mm	T15 Cannulated Screwdriver, Medium Cannulated Depth Gauge & Countersink, 1.1mm CoCr Guide Wires (2)
GWK 300	L	5.5mm/6.5mm/7.3mm	T25 Cannulated Screwdriver, Large Cannulated Depth Gauge & Countersink, 2.0mm CoCr Guide Wires (2)

Instrument Kits continued

INSTRUMENT KITS (continued)

Additional Guide Wires (2 per kit)

PRODUCT NO.	SIZE	MATERIAL	G-WIRE DIAMETER
GWK 108	S	CoCr	0.8mm x 160mm
GWK 111	M	CoCr	1.1mm x 160mm
GWK 120	L	CoCr	2.0mm x 160mm
GWK 122	L	Stainless Steel	2.0mm x 220mm
GWK 125	M	CoCr	1.25mm x 160mm



Power Driver Kits

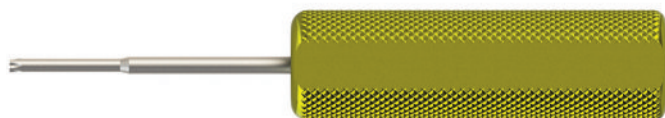
PRODUCT NO.	DESCRIPTION
FIM 015	Power Driver G-Wire Kit for 3.0-4.5mm Cannulated Screws (contains T15 power driver bit, 1.1mm x 160mm G-Wires (4))
FIM 025	Power Driver G-Wire Kit for 5.5-7.3mm Cannulated Screws (contains T25 power driver bit, 2.0mm x 160mm G-Wires (4))
FIM 115	Large Bone K-Wire Kit for 2.7-4.0mm Solid screws (contains T15 Speed Driver Bit, 1.4mm x 140mm K-wires(2))



E-KIT™ (EFFICIENCY KIT)

The Flower E-Kit contains all of the necessary instruments for cases requiring the use of both medium plates and medium cannulated screws.

E-KIT™ ADVANCED (EWK 201)



T15 Cannulated Screwdriver



Cannulated Depth Gauge & Countersink



Olive Wires (2)



1.1mm CoCr Guide Wires (2)



Plating Depth Gauge



PRODUCT NO.	KIT SIZE	SCREW DIAMETERS	CONTENTS OF KIT
EWK 201	M	2.7mm/3.0mm /3.5mm/4.0mm	T15 Cannulated Screwdriver, Plating Depth Gage, 1.1mm CoCr Guide Wires (2), Olive Wires (2), Cannulated Countersink

Ready-For-Surgery™ Solutions

SnapFix Screw System

The comprehensive Conventus Flower SnapFix Screw System was designed to provide a superior level of stable compression. The headed screw exhibits multiple key advantages.

System Features

- Fully Threaded
- Self-Drilling & Self-Tapping Screw Tips
- Hybrid Cortical & Cancellous Thread
- Low Profile Head to Deliver Maximum Compression
- Optimized Snap-Off Feature



Ordering Information

Product #	Size
FSS 210	2.0mm x 10mm
FSS 212	2.0mm x 12mm
FSS 214	2.0mm x 14mm
FSS 216	2.0mm x 16mm
FSS 218	2.0mm x 18mm

Product #	Size
FSS 310	3.0mm x 10mm
FSS 312	3.0mm x 12mm
FSS 314	3.0mm x 14mm
FSS 316	3.0mm x 16mm
FSS 318	3.0mm x 18mm
FSS 320	3.0mm x 20mm
FSS 322	3.0mm x 22mm

DRILL BIT KITS

Drill Bit Kits and Lag Screw Kits are packaged with the appropriate drill guides. Cannulated and solid drill bits for all applicable screw diameters are included in the FlowerCube™.

DRILL BIT KITS (DBK)

The Drill Bit Kit contains a drill bit and drill guide to prepare a pilot hole for locking and non-locking plating screws.



PRODUCT NO.	KIT SIZE	SCREW DIAMETERS	CONTENTS OF KIT	A/O CONNECTION
DBK 015	S	1.5mm	1.1mm Drill Bit, Drill Guide	
DBK 020	S	2.0mm	1.5mm Drill Bit, Drill Guide	✓
DBK 024	S	2.4mm	1.8mm Drill Bit, Drill Guide	✓
DBK 027	M	2.7mm	2.0mm Drill Bit, Drill Guide	✓
DBK 030	M	3.0mm	2.0mm Drill Bit, Drill Guide	✓
DBK 135	M	3.5mm	2.5mm Drill Bit, Drill Guide	✓
DBK 040	M	4.0mm	3.0mm Drill Bit, Drill Guide	✓

DISTAL RADIUS DRILL BIT KIT (FDR 991)

For distal screw (1.8mm locking peg or 2.4mm screw on Flower Distal Radius plates) insertion, the laser marked line on the drill allows for screw measurement without requiring a Depth Gauge.



PRODUCT NO.	KIT SIZE	SCREW DIAMETERS	CONTENTS OF KIT
FDR 991	S	1.8mm (Peg), 2.4mm (Screw)	Drill Bit: 1.8mm, Depth Measuring Drill Guide

LAG SCREW KITS (LSK)

The Lag Screw Kits contain a drill bit and drill guide required to create an over drill, or gliding hole, when performing a Lag Screw Technique.



PRODUCT NO.	KIT SIZE	SCREW DIAMETERS	CONTENTS OF KIT	DOUBLE-SIDED DRILL GUIDE	A/O CONNECTION
LSK 015	S	1.5mm	1.5mm Drill Bit, Drill Guide		
LSK 020	S	2.0mm	2.0mm Drill Bit, Drill Guide		✓
LSK 124	S	2.4mm	2.4mm Drill Bit, Drill Guide	✓	✓
LSK 127	M	2.7mm	2.7mm Drill Bit, Drill Guide	✓	✓
LSK 030	M	3.0mm	3.0mm Drill Bit, Drill Guide		✓
LSK 035	M	3.5mm	3.5mm Drill Bit, Drill Guide	✓	✓
LSK 040	M	4.0mm	4.0mm Drill Bit, Drill Guide	✓	✓

CANNULATED DRILL BIT (CDB)

Individually packaged Cannulated Drill Bit.

Cannulated Drill Bits with CDB 0XX part numbers are standard length.

Cannulated Drill Bits with CDB 2XX are long length.



SCREW DIAMETER	PILOT HOLE PRODUCT NO.	PILOT HOLE DRILL DIAMETER	GLIDING HOLE PRODUCT NO.	GLIDING HOLE DRILL DIAMETER
2.0mm	CDB 017/217	1.7mm	CBD 020	2.0mm
2.4mm	CDB 017/217	1.7mm	CBD 024	2.4mm
3.0mm	CDB 020/220	2.0mm	CBD 030	3.0mm
3.5mm	CDB 024/224	2.4mm	CDB 035	3.5mm
4.0mm	CDB 026/226	2.6mm	CDB 040	4.0mm
4.5mm	CDB 030/230	3.0mm	CDB 045	4.5mm
5.5mm	CDB 040/240	4.0mm	-	-
6.5mm	CDB 050/250	5.0mm	CDB 065	6.5mm
7.3mm	CDB 050/250	5.0mm	-	-

ANCILLARY INSTRUMENTS



Reamer for Four Corner Fusion Plate

PRODUCT NO.	REAMER DIAMETER
FIS 204	17.5mm



Additional K-Wires

PRODUCT NO.	CONTENTS
KWK 102	1.4mm x 140mm K-Wires (2)



Cannulated Reamer Kits for MTP Fusion

PRODUCT NO.	REAMER DIAMETER
CRK 018	18mm
CRK 021	21mm
CRK 024	24mm



Plate Benders

PRODUCT NO.	SIZE	PLATE THICKNESS
FIS 231	S	Up to 2.0mm
FIM 234	M	> 2.0mm

LOWER EXTREMITY FLOWERCUBES™

FOREFOOT FLOWERCUBE™

The Forefoot FlowerCube™ consists of low profile stabilization plates, locking and non-locking screws and all required instruments required to treat a wide variety of fractures, osteotomies and fusions of the lesser metatarsals.

Plates (for use with 1.5mm, 2.0mm and 2.4mm screws)

COMPRESSION T-PLATES, OBLIQUE

PRODUCT NO.	ORIENTATION	HOLES
FFP 107	Left	7
FFP 207	Right	7



COMPRESSION T-PLATES

PRODUCT NO.	HOLES
FFP 317	7
FFP 318	8



COMPRESSION Y-PLATES

PRODUCT NO.	HOLES
FFP 326	6
FFP 327	7



AKIN PLATE

PRODUCT NO.	HOLES
FFP 302	2



STRAIGHT PLATES

PRODUCT NO.	WIDTH (mm)	LENGTH (mm)	THICKNESS (mm)	HOLES
FFP 404	5.0	24.5	1.6	4
FFP 405	5.0	32.65	1.6	5
FFP 406	5.0	39.15	1.6	6
FFP 407	5.0	45.65	1.6	7
FFP 408	5.0	52.15	1.6	8



L-PLATES

PRODUCT NO.	ORIENTATION	WIDTH (mm)	LENGTH (mm)	THICKNESS (mm)	HOLES
FHF 420	Right	5.2	29	1.5	6
FHF 425	Left	5.2	29	1.5	6



OBLIQUE T-PLATES

PRODUCT NO.	ORIENTATION	WIDTH (mm)	LENGTH (mm)	THICKNESS (mm)	HOLES
FHF 430	Right	5.2	31	1.5	6
FHF 435	Left	5.2	31	1.5	6



T-PLATES

PRODUCT NO.	WIDTH (mm)	LENGTH (mm)	THICKNESS (mm)	HOLES
FHF 440	5.2	30	1.5	6
FHF 445	5.1	29	1.5	7



Gold = Left Green = Right Blue = Universal

Trials

LESSER METATARSAL PLATE TRIALS

PRODUCT NO.

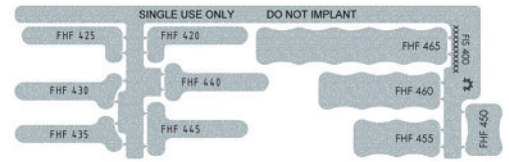
FIS 614



SMALL BONE PLATE TRIALS

PRODUCT NO.

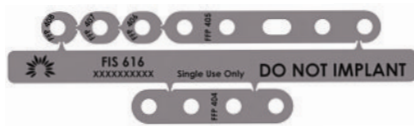
FIS 400



STRAIGHT PLATE TRIALS

PRODUCT NO.

FIS 616



Screws

2.0MM LOCKING (FHF 006-FHF 022)

LENGTH	QUANTITY
6mm	3
8mm	3
10mm	3
12mm	3
14mm	3
16mm	3
18mm	3
20mm	3
22mm	3

2.4MM LOCKING (FHF 106-FHF 120)

LENGTH	QUANTITY
6mm	3
8mm	4
10mm	5
12mm	5
14mm	4
16mm	3
18mm	3
20mm	2

2.0MM NON-LOCKING (FBS 006-FBS 022)

LENGTH	QUANTITY
6mm	3
8mm	3
10mm	3
12mm	3
14mm	3
16mm	3
18mm	2
20mm	2
22mm	2

2.4MM COMPRESSION (FCS 406-FCS 420)

LENGTH	QUANTITY
6mm	3
8mm	3
10mm	4
12mm	4
14mm	3
16mm	3
18mm	3
20mm	2

*1.5mm locking and non-locking available. Additional lengths available.

Instruments

PRODUCT NO.	INSTRUMENTS	QUANTITY
KWK 100	K-Wire Kit, Small Plates	2
DBK 020	1.5mm Drill Bit for 2.0mm Screws, Drill Guide	2
DBK 024	1.8mm Drill Bit for 2.4mm Screws, Drill Guide	2
KWK 102	1.4mm x 140mm K-Wires (2)	1
LSK 020	2.0mm Drill Bit for 2.0mm Lag Screws, Drill Guide	1
LSK 124	2.4mm Drill Bit for 2.4mm Lag Screws, Drill Guide	1
FIS 231	Plate Benders (S) (2)	1
RMD 100	T6 Screwdriver	1

Plates Additionally Available

H-PLATES

PRODUCT NO.	WIDTH (mm)	LENGTH (mm)	THICKNESS (mm)	HOLES
FHF 450	11	15	1.5	2x2
FHF 455	11	25	1.5	3x2
FHF 460	11	35	1.5	4x2
FHF 465	11	55	1.5	6x2



FIRST RAY FLOWERCUBE™

The First Ray FlowerCube™ consists of anatomically contoured plates, locking and non-locking screws and all required instruments to treat fractures, osteotomies, and joint fusions of the midfoot.

LAPIDUS PLATES (LOW PROFILE LOCKING)

PRODUCT NO.	VERSION	HOLES
LFP 011	Right	4
LFP 012	Left	4
LFP 111	Right	5
LFP 112	Left	5
LFP 401	Alpha	4
LFP 402	Beta	4



MCP PLATES

PRODUCT NO.	ORIENTATION	LENGTH (mm)
MCP 001	Left	70
MCP 002	Right	70



MTP PLATES (CONVERGENT)

PRODUCT NO.	ORIENTATION	HOLES
MFP 401	Left	6
MFP 402	Right	6



MTP PLATES (INLINE)

PRODUCT NO.	ORIENTATION	HOLES
MFP 011	Right	5
MFP 012	Left	5
MFP 211	Right	5
MFP 212	Left	5

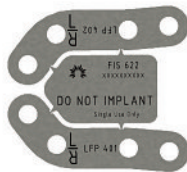


Trials

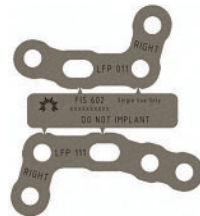
LAPIDUS PLATE TRIALS

PRODUCT NO.

FIS 622



FIS 602



CANNULATED REAMER TRIALS (FOR USE WITH THE MTP PLATE)

PRODUCT NO.

FIS 613



MEDIAL COLUMN PLATE TRIALS

PRODUCT NO.

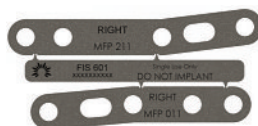
FIS 615



MTP PLATE TRIALS

PRODUCT NO.

FIS 601



FIS 621



First Ray FlowerCube™ (continued)

Screws

2.7MM LOCKING (FLP 208-FLP 224)

LENGTH	QUANTITY
8mm	3
10mm	3
12mm	3
14mm	3
16mm	3
18mm	3
20mm	3
22mm	3
24mm	3

3.5MM LOCKING (FRP 308-324)

LENGTH	QUANTITY
8mm	3
10mm	3
12mm	3
14mm	3
16mm	3
18mm	3
20mm	3
22mm	3
24mm	3

2.7MM COMPRESSION (FCS 210-FCS 224)

LENGTH	QUANTITY
10mm	2
12mm	2
14mm	2
16mm	2
18mm	2
20mm	2
22mm	2
24mm	2

3.5MM COMPRESSION (FCS 510-FCS 545)

LENGTH	QUANTITY
10mm	2
12mm	2
14mm	2
16mm	2
18mm	2
20mm	2
22mm	2
24mm	2
26mm	2
28mm	2
30mm	2
32mm	2
34mm	2
36mm	2
38mm	2
40mm	2
45mm	2

*3.5mm locking available. 3.0mm and 4.0mm non-locking available. Additional lengths available.

Instruments

PRODUCT NO.	INSTRUMENTS	QUANTITY
EWK 201	Flower E-Kit, Advanced	1
DBK 027	2.0mm Drill Bit for 2.7mm Screws, Drill Guide	1
DBK 135	2.5mm Drill Bit for 3.5mm Screws, Drill Guide	1
FIS 231	Plate Benders (S) (2)	1
KWK 102	1.4mm x 140mm K-wires (2)	1
LSK 035	3.5mm Drill Bit for 3.5mm Lag Screws, Drill Guide	1
CRK 018	Cannulated Reamer Kit, 18mm	1
CRK 021	Cannulated Reamer Kit, 21mm	1
CRK 024	Cannulated Reamer Kit, 24mm	1
LSK 127	2.7mm Drill Bit for 2.7mm Lag Screws, Drill Guide, 45mm	2
RMD 200	T15 Screwdriver	1

MIDFOOT FLOWERCUBE™

The Midfoot FlowerCube™ consists of anatomically contoured plates, locking and non-locking screws and all required instruments to treat fractures, osteotomies, and joint fusions of the midfoot.

Plates (for use with 2.7mm, 3.0mm, 3.5mm and 4.0mm screws)

TMT PLATES

PRODUCT NO.	ORIENTATION	HOLES
FFP 001	Right	5
FFP 002	Left	5



TWO HOLE LOCKING PLATE

PRODUCT NO.	LENGTH(mm)	HOLES
FFP 071	24	2



NC PLATES (NAVICULAR CUNEIFORM FUSION)

PRODUCT NO.	ORIENTATION	HOLES
FFP 006	Straight	6
FFP 021	Right	5
FFP 022	Left	5



TWO HOLE COMPRESSION PLATE

PRODUCT NO.	LENGTH(mm)	HOLES
FFP 072	26	2



STRAIGHT PLATES WITH SLOTS

PRODUCT NO.	LENGTH(mm)	HOLES
FFP 094	40	4
FFP 095	48	5
FFP 096	56	6



X-PLATE

PRODUCT NO.	LENGTH(mm)	WIDTH(mm)	HOLES
FFP 617	25	18	4



X-COMPRESSION PLATES

PRODUCT NO.	LENGTH(mm)	WIDTH(mm)	HOLES
FFP 618	25	18	5
FFP 622	30	18	5



UTILITY PLATES

PRODUCT NO.	LENGTH(mm)	HOLES
FFP 014	37.5	4
FFP 015	42	5



LOW PROFILE LOCKING PLATE

PRODUCT NO.	LENGTH(mm)	HOLES
FFP 082	17	2
FFP 083	25	3
FFP 084	33	4
FFP 085	41	5
FFP 086	49	6
FFP 087	57	7
FFP 088	65	8



Trials

NC PLATE TRIALS

PRODUCT NO.

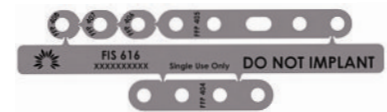
FIS 607



STRAIGHT PLATE WITH SLOTS TRIALS

PRODUCT NO.

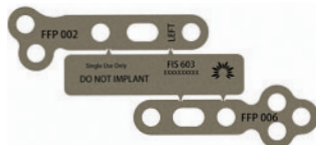
FIS 610



TMT PLATE TRIALS

PRODUCT NO.

FIS 603



X-PLATE TRIALS

PRODUCT NO.

FIS 611



TWO HOLE PLATE TRIALS

PRODUCT NO.

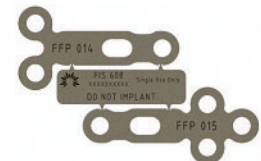
FIS 612



UTILITY PLATE TRIALS

PRODUCT NO.

FIS 608



LOW PROFILE LOCKING PLATE TRIALS

PRODUCT NO.

FIS 623



Midfoot FlowerCube™ (continued)

Screws

2.7MM LOCKING (FLP 208-FLP 224)

LENGTH	QUANTITY
8mm	3
10mm	3
12mm	3
14mm	3
16mm	3
18mm	3
20mm	3
22mm	3
24mm	3

3.0MM LOCKING (FLP 308-324)

LENGTH	QUANTITY
8mm	3
10mm	3
12mm	3
14mm	3
16mm	3
18mm	3
20mm	3
22mm	3
24mm	3

2.7MM COMPRESSION (FCS 210-FCS 224)

LENGTH	QUANTITY
10mm	2
12mm	2
14mm	2
16mm	2
18mm	2
20mm	2
22mm	2
24mm	2

3.5MM COMPRESSION (FCS 510-FCS 545)

LENGTH	QUANTITY
10mm	2
12mm	2
14mm	2
16mm	2
18mm	2
20mm	2
22mm	2
24mm	2
26mm	2
28mm	2
30mm	2
32mm	2
34mm	2
36mm	2
38mm	2
40mm	2
45mm	2

*3.5mm locking available. 3.0mm and 4.0mm non-locking available. Additional lengths available.

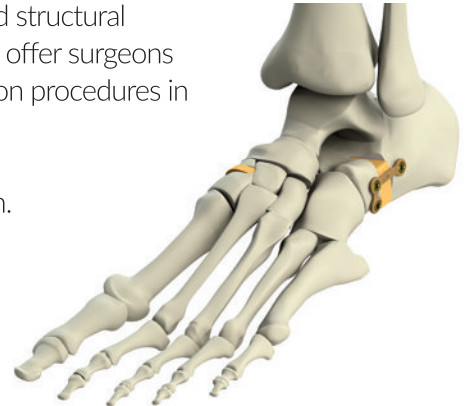
Instruments

PRODUCT NO.	INSTRUMENTS	QUANTITY
EWK 201	Flower E-Kit, Advanced	1
DBK 027	2.0mm Drill Bit for 2.7mm Screws, Drill Guide	1
DBK 030	3.0mm Drill Bit, D: 2.0mm, Drill Guide	1
DBK 135	2.5mm Drill Bit for 3.5mm Screws, Drill Guide	1
FIS 231	Plate Benders (S) (2)	1
KWK 102	1.4mm x 140mm K-wires (2)	1
LSK 030	3.0mm Drill Bit, D: 3.0mm, Drill Guide	1
LSK 035	3.5mm Drill Bit for 3.5mm Lag Screws, Drill Guide	1
LSK 127	2.7mm Drill Bit for 2.7mm Lag Screws, Drill Guide	1
RMD 200	T15 Screwdriver	1

FLOWERGRAFT™ FLOWERCUBE™

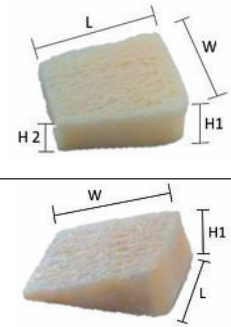
The FlowerGraft™ Preshaped Bone Wedge System is a complete line of preshaped structural allografts for Evans and Cotton procedures. FlowerGraft Preshaped Bone Wedges offer surgeons convenient, safe, reliable, Ready-for-Surgery™ options for performing reconstruction procedures in the foot and ankle.

- Allografts packaged in saline, eliminating the need for intra-operative preparation.
- Gamma-sterilized bicortical allograft design for increased strength.
- Preshaped for Evans and Cotton Osteotomies.
- Low-profile bridge plates available for fixating allografts.
- All bone will ship separate from the FlowerCube™.



BICORTICAL, PRESHAPED ALLOGRAFTS

PRODUCT NO.	PRODUCT DESCRIPTION	HEIGHT 1	HEIGHT 2	WIDTH	LENGTH
AGB 106	Bi-cortical Preshaped Evans Allograft	6mm	4mm	22mm	22mm
AGB 108	Bi-cortical Preshaped Evans Allograft	8mm	5mm	22mm	22mm
AGB 110	Bi-cortical Preshaped Evans Allograft	10mm	5mm	22mm	22mm
AGB 112	Bi-cortical Preshaped Evans Allograft	12mm	5mm	22mm	22mm
AGB 305	Bi-cortical Preshaped Cotton Allograft	5mm	-	16mm	22mm
AGB 306	Bi-cortical Preshaped Cotton Allograft	6mm	-	16mm	22mm
AGB 307	Bi-cortical Preshaped Cotton Allograft	7mm	-	16mm	22mm
AGB 308	Bi-cortical Preshaped Cotton Allograft	8mm	-	16mm	22mm



Plates

EVANS PLATES

PRODUCT NO.	DESCRIPTION
AGB 116	Evans Plate, 16mm, Left
AGB 216	Evans Plate, 16mm, Right
AGB 120	Evans Plate, 20mm, Left
AGB 220	Evans Plate, 20mm, Right



Osteotomy Kits

PRODUCT NO.	CONTENTS OF KIT
AGB 901	Cotton Trial, Tamp, 1.6mm x 140mm K-Wire
AGB 902	Evans Trial, Tamp, 1.6mm x 140mm K-Wire



Instruments

PRODUCT NO.	INSTRUMENTS	QUANTITY
DBK 135	Drill Bit, D: 2.5mm Drill Guide	1
AGB 901	Cotton Trial, Tamp, 1.6mm x 140mm K-Wire	1
AGB 902	Evans Trial, Tamp, 1.6mm x 140mm K-Wire	1
EWK 201	Flower E-Kit, Advanced	1
FIS 231	Plate Bender (S) 2 Pieces	1
EWK 501	FlowerADC™	1
RMD 200	T15 Screwdriver	1

Screws

3.5MM LOCKING (FRP 310 - FRP 340)

LENGTH	QUANTITY
10mm	2
12mm	3
14mm	3
16mm	3
18mm	3
20mm	3
22mm	3
24mm	3
26mm	2
28mm	2
30mm	2
32mm	2
34mm	2
36mm	2
38mm	2
40mm	2

3.5MM NON-LOCKING (FCS 516 - FCS 524)

LENGTH	QUANTITY
16mm	2
18mm	2
20mm	2
22mm	2
24mm	2

*2.7mm and 3.0mm locking and non-locking available. Additional lengths available

LOWER EXTREMITY FLOWERCUBES™

FIBULA FLOWERCUBE™

The Fibula FlowerCube™ consists of straight and anatomic fibula plates, locking and non-locking screws and all required instruments to treat fibula fractures.

Plates (for use with 2.7mm, 3.0mm, 3.5mm and 4.0mm screws)

STRAIGHT LOCKING FIBULA PLATES

PRODUCT NO.	LENGTH(mm)	HOLES
DLF 505	59	5
DLF 506	71	6
DLF 507	83	7
DLF 508	95	8
DLF 510	119	10



STRAIGHT LOCKING FIBULA PLATES WITH SYNDESMOTIC SLOT*

PRODUCT NO.	LENGTH(mm)	HOLES
DLF 006	77	6
DLF 007	89	7
DLF 008	101	8



ANATOMIC DISTAL FIBULA PLATES

PRODUCT NO.	ORIENTATION	LENGTH(mm)	HOLES
DLF 104	Left	84.5	4
DLF 204	Right	84.5	4
DLF 105	Left	96.5	5
DLF 205	Right	96.5	5
DLF 107	Left	120.5	7
DLF 207	Right	120.5	7



CONSTRUCTOR® ROPE SYNDESMOSIS REPAIR KIT

PRODUCT NO.
DLF 002 Constrictor Rope



Trials

STRAIGHT LOCKING FIBULA PLATE TRIALS

PRODUCT NO.
FIS 657



ANATOMIC DISTAL FIBULA PLATE TRIALS

PRODUCT NO.
FIS 653



STRAIGHT LOCKING FIBULA WITH SYNDESMOTIC SLOT PLATE TRIALS

PRODUCT NO.
FIS 652*



* Additionally available

Fibula FlowerCube™ (continued)

Screws

2.7MM LOCKING (FLP 210-FLP 222)

LENGTH	QUANTITY
10mm	3
12mm	3
14mm	3
16mm	3
18mm	2
20mm	2
22mm	2

3.5MM LOCKING (FRP 310-FRP 322)

LENGTH	QUANTITY
10mm	6
12mm	6
14mm	6
16mm	4
18mm	4
20mm	3
22mm	2

3.5MM COMPRESSION (FCS 510-FCS 530)

LENGTH	QUANTITY
10mm	6
12mm	6
14mm	6
16mm	6
18mm	4
20mm	4
22mm	2
24mm	2
26mm	2
28mm	2
30mm	2

4.0MM COMPRESSION (FCS 610-FCS 660)

LENGTH	QUANTITY
10mm	2
12mm	3
14mm	3
16mm	3
18mm	3
20mm	2
40mm	2
45mm	2
50mm	2
55mm	2
60mm	2

*3.0mm locking available. 2.7mm and 3.0mm non-locking/compression available. Additional lengths available.

Instruments

PRODUCT NO.	INSTRUMENTS	QUANTITY
EWK 201	Flower E-Kit, Advanced	2
DBK 027	2.0mm Drill Bit for 2.7mm Screws, Drill Guide	1
DBK 135	2.5mm Drill Bit for 3.5mm Screws, Drill Guide	2
DBK 040	3.0mm Drill Bit for 4.0mm Screws, Drill Guide	1
DLF 901	FlowerRope Instrument Kit	1
LSK 127	2.7mm Drill Bit for 2.7mm Lag Screws, Drill Guide	1
LSK 035	3.5mm Drill Bit for 3.5mm Lag Screws, Drill Guide	1
LSK 040	4.0mm Drill Bit for 4.0mm Lag Screws, Drill Guide	1
FIM 115	Large Bone K-wire Kit	1
FIS 231	Plate Benders (S) (2)	1
RMD 200	T15 Screwdriver	1

TIBIA FLOWERCUBE™

The Tibia FlowerCube™ consists of anatomically contoured tibia plates, locking and non-locking screws and all required instruments to treat tibia fractures.

Plates (for use with 2.7mm, 3.0mm, 3.5mm and 4.0mm screws)

ANTERIOR LATERAL DISTAL TIBIA PLATES

PRODUCT NO.	ORIENTATION	LENGTH(mm)	HOLES
DLT 107	Left	110	7
DLT 207	Right	100	7
DLT 110	Left	146	10
DLT 210	Right	146	10



MEDIAL DISTAL TIBIA PLATES (PACKAGED WITH MIS INSERTION POST)

PRODUCT NO.	ORIENTATION	LENGTH(mm)	HOLES
DMT 308	Left	153.5	8
DMT 408	Right	153.5	8
DMT 310	Left	177.5	10
DMT 410	Right	177.5	10



DISTAL TIBIA A PLATES (ANTERIOR OR POSTERIOR)

PRODUCT NO.	LENGTH(mm)	WIDTH(mm)	HOLES
DAT 005	44	27	5

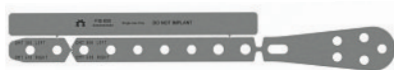


Trials

MEDIAL DISTAL TIBIA PLATE TRIALS

PRODUCT NO.

FIS 650



DISTAL TIBIA A-PLATE TRIALS

PRODUCT NO.

FIS 654



ANTERIOR LATERAL DISTAL TIBIA PLATE TRIALS

PRODUCT NO.

FIS 651



TIBIA FLOWERCUBE™ (CONTINUED)

Screws

3.5MM LOCKING (FRP 314-FRP 340)

LENGTH	QUANTITY
14mm	3
16mm	3
18mm	3
20mm	3
22mm	3
24mm	3
26mm	3
28mm	3
30mm	3
32mm	3
34mm	3
36mm	3
38mm	3
40mm	3

3.5MM COMPRESSION (FCS 514-FCS 540)

LENGTH	QUANTITY
14mm	3
16mm	3
18mm	3
20mm	3
22mm	3
24mm	3
26mm	3
28mm	3
30mm	3
32mm	3
34mm	3
36mm	3
38mm	3
40mm	3

4.0MM COMPRESSION (FCS 616-FCS 655)

LENGTH	QUANTITY
16mm	3
20mm	2
24mm	2
28mm	2
32mm	2
36mm	2
40mm	2
45mm	2
50mm	2
55mm	2

* 2.7mm and 3.0mm locking available. 2.7mm and 3.0mm non-locking/compression available.
Additional lengths available.

Instruments

PRODUCT NO.	INSTRUMENTS	QUANTITY
EWK 201	Flower E-Kit, Advanced	1
DBK 135	2.5mm Drill Bit for 3.5mm Screws, Drill Guide	1
DBK 040	3.0mm Drill Bit for 4.0mm Screws, Drill Guide	1
LSK 035	3.5mm Drill Bit for 3.5mm Lag Screws, Drill Guide	1
LSK 040	4.0mm Drill Bit for 4.0mm Lag Screws, Drill Guide	1
KWK 102	1.4mm x 140mm K-Wires (2)	1
FIM 115	Large Bone K-wire Kit	1
FIM 234	Plate Benders (M)	1
RMD 200	T15 Screwdriver	1

CALCANEUS FLOWERCUBE™

The Calcaneus FlowerCube™ consists of Extensile and MIS calcaneus plates, locking and non-locking screws and all required instruments to treat calcaneus fractures.

EXTENSILE CALCANEUS PLATES (Small, Medium, & Large)

PRODUCT NO.	O RIENTATION	WIDTH (mm)	LENGTH (mm)	THICKNESS (mm)	HOLES
CPF 101	Left (S)	32.7	57	1.25-1.75	12
CPF 102	Left (M)	35.4	64.1	1.25-1.75	13
CPF 103	Left (L)	36.5	71.5	1.25-1.75	13
CPF 201	Right (S)	32.7	57	1.25-1.75	12
CPF 202	Right (M)	35.4	64.1	1.25-1.75	13
CPF 203	Right (L)	36.5	71.5	1.25-1.75	13



MIS CALCANEUS PLATES (Small, Medium, & Large)

PRODUCT NO.	O RIENTATION	WIDTH (mm)	LENGTH (mm)	THICKNESS (mm)	HOLES
CPF 112	Left (S)	32.4	59.5	1.75	10
CPF 113	Left (M)	33.9	65.8	1.75	10
CPF 114	Left (L)	36.5	69.6	1.75	11
CPF 212	Right (S)	32.4	59.5	1.75	10
CPF 213	Right (M)	33.9	65.8	1.75	10
CPF 214	Right (L)	36.5	69.6	1.75	11



Trials

CALCANEUS PLATE TRIALS, EXTENSILE

PRODUCT NO.

CPF 996

CALCANEUS PLATE TRIALS, MIS

PRODUCT NO.

CPF 997

MIS Insertion/Incision Guides

MIS CALCANEUS PLATE INSERTION/INCISION GUIDE (SMALL)

PRODUCT NO.

CPF 992

MIS CALCANEUS PLATE INSERTION/INCISION GUIDE (MEDIUM)

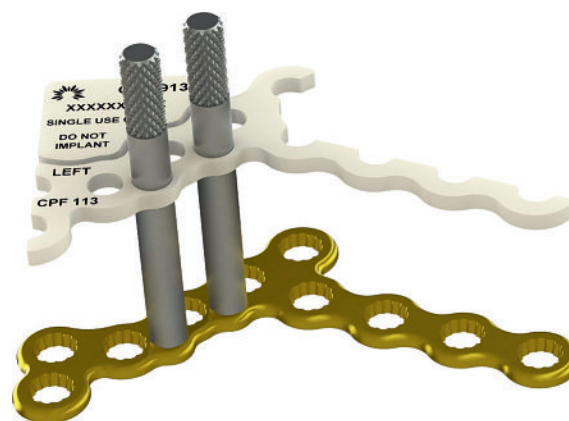
PRODUCT NO.

CPF 993

MIS CALCANEUS PLATE INSERTION/INCISION GUIDE (LARGE)

PRODUCT NO.

CPF 994



Calcaneus FlowerCube™ (continued)

Variable Angle Screws

3.5MM LOCKING SCREW (FRP 320-FRP 350)

LENGTH	QUANTITY
20mm	3
22mm	3
24mm	3
26mm	6
28mm	6
30mm	6
32mm	6
34mm	6
36mm	3
38mm	3
40mm	3
45mm	3
50mm	3

3.5MM COMPRESSION SCREW (FCS 520-FCS 550)

LENGTH	QUANTITY
20mm	2
22mm	2
24mm	2
26mm	2
28mm	2
30mm	2
32mm	2
34mm	2
36mm	2
38mm	2
40mm	2
45mm	2
50mm	2

4.0MM COMPRESSION SCREW (FCS 620-FCS 650)

LENGTH	QUANTITY
20mm	2
22mm	2
24mm	2
26mm	2
28mm	2
30mm	2
32mm	2
34mm	2
36mm	2
38mm	2
40mm	2
45mm	2
50mm	2

Instruments

PRODUCT NO.	INSTRUMENTS	QUANTITY
PTK 400	Calcaneus Plate Tack/Support Pin	2
DBK 135	Drill Bit Kit, 3.5mm	2
DBK 040	Drill Bit Kit, 4.0mm	1
LSK 035	Lag Screw Kit, 3.5mm	1
LSK 040	Lag Screw Kit, 4.0mm	1
FIS 231	Plate Benders, Small	1
EWK 201	E-Kit, Medium, Advanced	2
RMD 200	T15 Screwdriver	1
FIM 115	Large Bone K-Wire Kit for 2.7-4.0mm Solid screws	1

JONES SCREW FLOWERCUBE™

The Jones Screw FlowerCube™ consists of screws specifically designed to treat Jones Fractures and includes all necessary instrumentation.

Jones Screws

4.5MM PARTIALLY THREADED (FJS 530-FJS 580)

LENGTH	QUANTITY
30mm	2
35mm	2
40mm	2
45mm	2
50mm	2
55mm	2
60mm	2
65mm	2
70mm	2
75mm	2
80mm	2



5.5MM PARTIALLY THREADED (FJS 630-FJS 680)

LENGTH	QUANTITY
30mm	2
35mm	2
40mm	2
45mm	2
50mm	2
55mm	2
60mm	2
65mm	2
70mm	2
75mm	2
80mm	2



4.5MM SHORT THREAD (FJS 136-FJS 165)

LENGTH	QUANTITY
36mm	2
38mm	2
40mm	2
42mm	2
44mm	2
46mm	2
48mm	2
50mm	2
55mm	2
60mm	2
65mm	2



5.5MM SHORT THREAD (FJS 236-FJS 265)

LENGTH	QUANTITY
36mm	2
38mm	2
40mm	2
42mm	2
44mm	2
46mm	2
48mm	2
50mm	2
55mm	2
60mm	2
65mm	2



Instruments

PRODUCT NO.	INSTRUMENTS	QUANTITY
EWK 201	E-Kit, Medium, Advanced	2
FIM 015	Power Driver G-Wire Kit, 3.0/4.0/3.5/4.5mm screws	1
CDB 030	3.0mm Cannulated Drill Bit for 4.5mm screws	2
CDB 040	4.0mm Cannulated Drill Bit	2
GWK 111	Guide Wires, 1.1mm x 160mm (2)	1
GWK 125	Guide Wires, 1.25mm x 160mm (2)	2
FJS 945	Jones Screw Tap, 4.5mm	1
FJS 955	Jones Screw Tap, 5.5mm	1
RMD 200	T15 Screwdriver	1

CANNULATED SCREW FLOWERCUBES™

SMALL CANNULATED FLOWERCUBE™

The Small Cannulated FlowerCube™ consists of 2.0mm and 2.4mm partially threaded cannulated and 2.4mm headless compression screws and all required instruments to treat fractures, osteotomies and joint fusions of small bones.

Cannulated Screws

2.0MM PARTIALLY THREADED (CSP 008-CSP 024)

LENGTH	QUANTITY
8mm	2
10mm	2
12mm	2
14mm	2
16mm	2
18mm	2
20mm	2
22mm	2
24mm	2

2.4MM PARTIALLY THREADED (CSP 108-CSP 130)

LENGTH	QUANTITY
8mm	2
10mm	2
12mm	2
14mm	2
16mm	2
18mm	2
20mm	2
22mm	2
24mm	2
26mm	2
28mm	2
30mm	2



Headless Compression Screws

2.4MM (HCS 106-HCS 140)

LENGTH	QUANTITY
6mm	3
8mm	3
10mm	3
12mm	3
14mm	3
16mm	3
18mm	3
20mm	3
22mm	3
24mm	3
26mm	3
28mm	3
32mm	3
36mm	3
40mm	3

3.0MM (HCS 610 - HCS 620)

LENGTH	QUANTITY
10mm	3
12mm	3
14mm	3
16mm	3
18mm	3
20mm	3



Instruments

PRODUCT NO.	INSTRUMENTS	QUANTITY
GWK 100	Guide Wire Kit, 2.0/2.4	2
GWK 108	CoCr Guide Wires, 0.8mm x 160mm (2)	2
CDB 017	1.7mm Cannulated Drill Bit for 2.0mm and 2.4mm screws	2
CDB 020	2.0 Cannulated Drill Bit for 3.0mm Screws	2
CDB 024	Cannulated Drill Bit for 2.4mm Screw	1
RMD 100	T6 Screwdriver	1

MEDIUM CANNULATED FLOWERCUBE™

The Medium Cannulated FlowerCube™ consists of 3.0mm, 3.5mm, 4.0mm and 4.5mm partially threaded cannulated screws, washers and all required instruments to treat a variety of fractures, fusions and osteotomies.

Cannulated Screws

3.0MM PARTIALLY THREADED (CSP 210-CSP 250)

LENGTH	QUANTITY
10mm	2
12mm	2
14mm	2
16mm	2
18mm	2
20mm	2
22mm	2
24mm	2
26mm	2
28mm	2
30mm	2
32mm	2
34mm	2
36mm	2
38mm	2
40mm	2
45mm	1
50mm	1

3.5MM PARTIALLY THREADED (CSP 320-CSP 345)

LENGTH	QUANTITY
20mm	2
22mm	2
24mm	2
26mm	2
28mm	2
30mm	2
32mm	2
34mm	2
36mm	2
38mm	2
40mm	2
45mm	2

4.0MM PARTIALLY THREADED (CNP 416 - CNP 460)

LENGTH	QUANTITY
16mm	2
18mm	2
20mm	2
22mm	2
24mm	2
26mm	2
28mm	2
30mm	2
32mm	2
34mm	2
36mm	2
38mm	2
40mm	2
42mm	2
44mm	2
45mm	2
46mm	2
48mm	2
50mm	2
55mm	2
60mm	2

4.5MM PARTIALLY THREADED (CNP 530 - 570)

LENGTH	QUANTITY
30mm	2
35mm	2
40mm	2
45mm	2
50mm	2
55mm	2
60mm	2
65mm	2
70mm	2



3.0mm, 3.5mm, 4.0mm and 4.5mm fully threaded cannulated screws available. Additional lengths available.

Headless Compression Screws

3.0MM (HCS 210-HCS 240)

LENGTH	QUANTITY
20mm	2
22mm	2
24mm	2
26mm	2
28mm	2
30mm	2

LENGTH	QUANTITY
32mm	2
34mm	2
36mm	2
38mm	2
40mm	2



4.0MM (HCS 414-HCS 460)

LENGTH	QUANTITY
14mm	2
16mm	2
18mm	2
20mm	2
22mm	2
24mm	2
26mm	2
28mm	2
30mm	2
32mm	2
34mm	2

LENGTH	QUANTITY
36mm	2
38mm	2
40mm	2
42mm	2
44mm	2
45mm	2
46mm	2
48mm	2
50mm	2
55mm	2
60mm	2



Instruments

PRODUCT NO.	INSTRUMENTS	QUANTITY
EWK 201	E-Kit, Medium, Advanced	2
OSW 100	Screw Washer, D:3.5mm/4.0mm/4.5mm	2
GWK 111	Guide Wires, 1.1mm x 160mm (2)	1
CDB 020	2.0mm Cannulated Drill Bit for 3.0mm screws	2
CDB 024	2.4mm Cannulated Drill Bit for 3.5mm screws	1
CDB 026	2.6mm Cannulated Drill Bit for 4.0mm screws	2
CDB 030	3.0mm Cannulated Drill Bit for 4.5mm screws	1
CDB 035	3.5mm Cannulated Drill Bit	1
CDB 040	4.0mm Cannulated Drill Bit	1
FIM 015	Power Driver G-Wire Kit, 3.0/4.0/3.5/4.5mm screws	1
RMD 200	T15 Screwdriver	1

LARGE CANNULATED FLOWERCUBE™

The Large Cannulated FlowerCube™ consists of 5.5mm, 6.5mm and 7.3mm cannulated screws and all required instruments to treat fusions, osteotomies and fractures of the foot, ankle and long bones.

Cannulated Screws

5.5MM PARTIALLY THREADED (CSP 630-CSP 670)

LENGTH	QUANTITY
30mm	2
35mm	2
40mm	2
45mm	2
50mm	2
55mm	2
60mm	2
65mm	2
70mm	2

6.5MM PARTIALLY THREADED (CSP 740-CSP 798)

LENGTH	QUANTITY
40mm	2
45mm	2
50mm	2
55mm	2
60mm	2
65mm	2
70mm	2
75mm	2
80mm	2
85mm	2
90mm	2
95mm	2
100mm	2
110mm	2
120mm	2

7.3MM PARTIALLY THREADED (CSP 850-CSP 898)

LENGTH	QUANTITY
50mm	2
55mm	2
60mm	2
65mm	2
70mm	2
75mm	2
80mm	2
85mm	2
90mm	2
95mm	2
100mm	2
110mm	2
120mm	2

6.5MM FULLY THREADED (CSF 740-CSF 780)

LENGTH	QUANTITY
40mm	2
45mm	2
50mm	2
55mm	2
60mm	2
65mm	2
70mm	2
75mm	2
80mm	2



Large Cannulated Screw Cubes are available with and without headless compression screws.

Headless Compression Screws

6.5MM (HCS 740 - 792)

LENGTH	QUANTITY
40mm	2
45mm	2
50mm	2
55mm	2
60mm	2
65mm	2
70mm	2
75mm	2
80mm	2
85mm	2
90mm	2
95mm	2
100mm	2

5.0MM (HCS 530 - 570)

LENGTH	QUANTITY
40mm	2
30mm	2
32mm	2
34mm	2
36mm	2
38mm	2
40mm	2
42mm	2
44mm	2
46mm	2
48mm	2
50mm	2
55mm	2
60mm	2
65mm	2
70mm	2



Instruments

PRODUCT NO.	INSTRUMENTS	QUANTITY
GWK 300	Guide Wire Kit, 5.5/6.5/7.3	2
OSW 200	Osteo Screw Washer, D:5.5mm/6.5mm/7.3mm	2
FIM 025	Power Driver G-Wire Kit	1
GWK 120	Guide Wires, 2.0mm x 160mm (2)	1
CDB 040	4.0mm Cannulated Drill Bit for 5.5mm screws	2
CDB 050	5.0mm Cannulated Drill Bit for 6.5mm and 7.3mm screws	2
CDB 065	6.5mm Cannulated Drill Bit for 6.5mm fully threaded screws	2
RMD 300	T25 Screwdriver	1
EWK 201	E-Kit, Advanced	2
FIM 015	Power Driver G-Wire Kit	1
GWK 122	Guide Wires, 2.0mm x 160mm	1
CDB 035	3.5mm Cannulated Drill Bit for 5.0mm Screws	2

FLOWERTOETM FLOWERCUBE™

The FlowerToe™ FlowerCube™ contains the implants and instruments necessary to perform multiple hammertoe corrections.

Screws

FLOWERTOETM CANNULATED

PRODUCT NO.	DIAMETER	LENGTH	QUANTITY
FHT 200	2.0mm	13mm	3
FHT 250	2.5mm	15mm	3
FHT 300	3.0mm	15mm	2

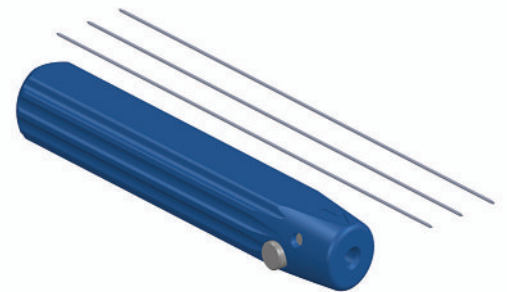


FLOWERTOETM SOLID

PRODUCT NO.	DIAMETER	LENGTH	ANGLE	QUANTITY
FHT 202	2.0mm	13mm	10°	3
FHT 252	2.5mm	15mm	10°	3

Instruments

PRODUCT NO.	INSTRUMENTS	QUANTITY
FHT 509	AO Handle with 0.9mm Guidewire Kit	2
FHT 511	AO Handle with 1.1mm Guidewire Kit	2



UPPER EXTREMITY FLOWERCUBES™

HAND FLOWERCUBE™

The Hand FlowerCube™ consists of low profile stabilization plates, locking and non-locking screws and all required instruments to treat a wide variety of fracture patterns of the hand.

Plates (for use with 1.5mm, 2.0mm and 2.4mm screws)

LOW PROFILE STRAIGHT PLATES

PRODUCT NO.	WIDTH (mm)	LENGTH (mm)	THICKNESS (mm)	HOLES
FHF 305	5.1	23	1.0	4
FHF 306	5.1	35	1.0	6
FHF 308	5.1	47	1.0	8
FHF 310	5.1	26	1.0	4
FHF 315	5.1	95	1.0	16



LOW PROFILE L-PLATES

PRODUCT NO.	ORIENTATION	WIDTH (mm)	LENGTH (mm)	THICKNESS (mm)	HOLES
FHF 320	Right	5.1	29	1.0	6
FHF 325	Left	5.1	29	1.0	6



LOW PROFILE OBLIQUE T-PLATES

PRODUCT NO.	ORIENTATION	WIDTH (mm)	LENGTH (mm)	THICKNESS (mm)	HOLES
FHF 330	Right	5.1	31	1.0	6
FHF 335	Left	5.1	31	1.0	6



LOW PROFILE T-PLATES

PRODUCT NO.	WIDTH (mm)	LENGTH (mm)	THICKNESS (mm)	HOLES
FHF 340	5.1	30	1.0	6
FHF 345	5.1	29	1.0	7



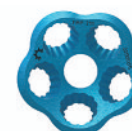
LOW PROFILE H-PLATES

PRODUCT NO.	WIDTH (mm)	LENGTH (mm)	THICKNESS (mm)	HOLES
FHF 350	10.7	15	1.0	2 x 2
FHF 355	10.7	25	1.0	3 x 2
FHF 360	10.7	35	1.0	4 x 2
FHF 365	10.7	55	1.0	6 x 2



FOUR CORNER FUSION PLATES

PRODUCT NO.	DIAMETER (mm)	HOLES
FMP 211	11.5	5
FMP 213	13.5	7



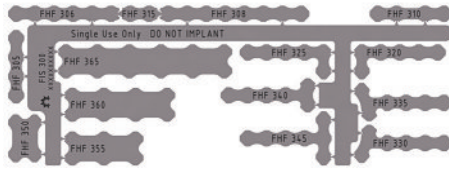
Hand FlowerCube™ (continued)

Trials

SMALL BONE PLATE TRIALS

PRODUCT NO.

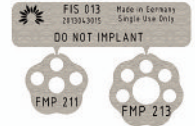
FIS 300



FOUR CORNER FUSION TRIALS

PRODUCT NO.

FIS 013



Screws

1.5MM LOCKING (FHF 206-210)

LENGTH	QUANTITY
6mm	4
7mm	3
8mm	4
9mm	3
10mm	4

2.0MM LOCKING (FHF 006-FHF 022)

LENGTH	QUANTITY
6mm	4
7mm	4
8mm	4
9mm	3
10mm	4
12mm	4
14mm	4
16mm	4
18mm	4
20mm	4
22mm	4

1.5MM NON-LOCKING (FBS 506-FBS 510)

LENGTH	QUANTITY
6mm	4
7mm	3
8mm	4
9mm	3
10mm	4

2.0MM NON-LOCKING (FBS 006-FBS 014)

LENGTH	QUANTITY
6mm	4
7mm	3
8mm	4
9mm	3
10mm	4
12mm	4
14mm	4

*2.4mm locking and non-locking available. Additional lengths available.

Instruments

PRODUCT NO.	INSTRUMENTS	QUANTITY
KWK100	K-Wire Kit, Small	2
DBK 015	1.1mm Drill Bit for 1.5mm Screws, Drill Guide	2
DBK 020	1.5mm Drill Bit for 2.0mm Screws, Drill Guide	2
LSK 015	1.5mm Drill Bit for 1.5mm Lag Screws, Drill Guide	1
LSK 020	2.0mm Drill Bit for 2.0mm Lag Screws, Drill Guide	1
FIS 204	Flower Reamer for Four Corner Fusion Plate	1
FIS 231	Plate Benders (S) (2 Pieces)	1
RMD 100	T6 Screwdriver	1

DISTAL RADIUS FLOWERCUBE™

The Distal Radius FlowerCube™ consists of anatomically contoured Distal Radius plates, screws and instruments to treat even the most complex distal radius fractures. Distal Radius plates are packaged with guide blocks.

Plates (for use with 1.8mm pegs, 2.4mm screws and 3.5mm screws)

ANATOMIC DISTAL RADIUS PLATES, NARROW

PRODUCT NO.	ORIENTATION	WIDTH (mm)	LENGTH (mm)	HOLES
FDR 001	Left	21.0	51	3
FDR 002	Right	21.0	51	3
FDR 021	Left	21.0	69.17	5
FDR 022	Right	21.0	69.17	5



ANATOMIC DISTAL RADIUS PLATES, STANDARD

PRODUCT NO.	ORIENTATION	WIDTH (mm)	LENGTH (mm)	HOLES
FDR 011	Left	24.0	51	3
FDR 012	Right	24.0	51	3
FDR 031	Left	24.0	69.17	5
FDR 032	Right	24.0	69.17	5

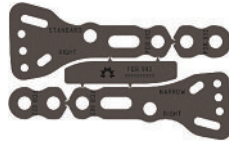


Trials

ANATOMIC DISTAL RADIUS PLATE TRIALS, NARROW/STANDARD

PRODUCT NO.

FDR 993



Screws

1.8MM LOCKING PEGS (FDR 116-FDR 122)

LENGTH	QUANTITY
16mm	6
18mm	6
20mm	6
22mm	6



2.4MM LOCKING (FHF 108-FHF 130)

LENGTH	QUANTITY
8mm	2
10mm	2
12mm	2
14mm	4
16mm	6
18mm	6
20mm	6
22mm	6
24mm	6
26mm	4
28mm	2
30mm	2

3.5MM LOCKING (FRP 308-FRP 318)

LENGTH	QUANTITY
8mm	2
10mm	2
12mm	2
14mm	2
16mm	2
18mm	2

2.4MM COMPRESSION (FCS 414-FCS 424)

LENGTH	QUANTITY
14mm	2
16mm	2
18mm	2
20mm	2
22mm	2
24mm	2

3.5MM COMPRESSION (FCS 510-FCS 518)

LENGTH	QUANTITY
10mm	3
12mm	3
14mm	3
16mm	2
18mm	2

*Additional lengths available

Instruments

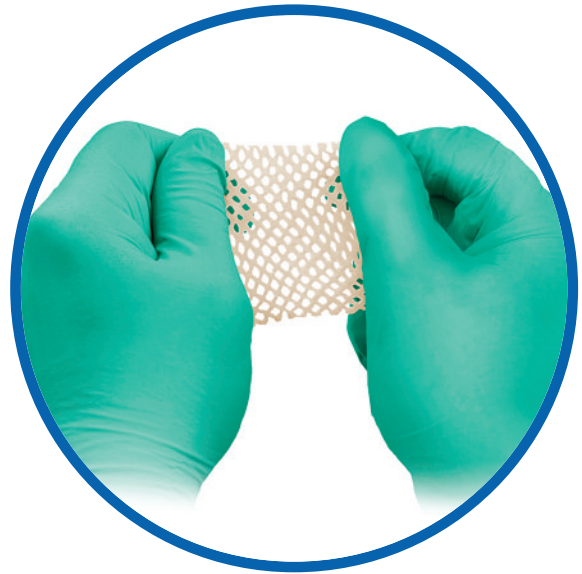
PRODUCT NO.	INSTRUMENTS	QUANTITY
KWK 901	Distal Radius K-Wire Kit	2
FDR 991	1.8mm Drill Bit for 1.8mm Pegs and 2.4mm Screws, Drill Guide	1
DBK 024	1.8mm Drill Bit for 2.4mm Screws, Drill Guide	1
DBK 135	2.5mm Drill Bit for 3.5mm Screws, Drill Guide	1

FLOWER BIOLOGICS

FlowerDerm™

FlowerDerm is an acellular dermal allograft intended to be used as a wound covering. FlowerDerm is available meshed with a thickness of 0.4mm - 1.0mm. FlowerDerm is available in a variety of convenient sizes for improved handling, delivery and optimal coverage.

- Biocompatible, remodelable, acellular dermal matrix
- Sterile – gamma-irradiated to SAL 10⁻⁶
- Remodels naturally without the need for chemical crosslinking
- Ready-for-Surgery™ – no rehydration required
- Solid derm has excellent tensile strength and suture retention strength

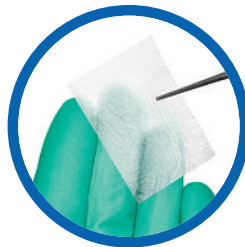


PRODUCT NO.	SIZE	THICKNESS
FDM 555	5x5cm, Meshed	0.4mm - 1.0mm
FDM 408	4x8cm, Solid	0.4mm - 1.0mm

FlowerPatch™

FlowerPatch™ is a dehydrated amniotic membrane allograft intended to be used as a wound covering. FlowerPatch is available in two thicknesses and various configurations for improved handling, delivery, and optimal coverage.

- Hydrophilic – adheres without fixation
- Easy to cut or shape
- No specific orientation required
- Creates no additional bulk at the site
- Resorbs naturally
- 5 year shelf life



PRODUCT NO.	SIZE
FBP 204	2x4cm
FBP 404	4x4cm
FBP 406	4x6cm
FBP 408	4x8cm

TAG™

TAG™ is a triple-layered amniotic membrane allograft derived from a planned C-section delivery. TAG™ is intended to be a wound covering.

- Three layers of amniotic tissue
- Chorion free; no specific orientation required
- Acts as a barrier and wound covering
- Readily adheres to the wound
- Easy handling for repositioning
- No preparation required
- Ambient temperature storage

PRODUCT NO.	SIZE
TAG 256	2.56 x 2.56cm
TAG 414	4 x 4cm

FLOWERCART™

Designed with OR efficiency and ease of use mind, the FlowerCart provides a mobile inventory solution for Flower's single-use, sterile product in high volume facilities. Fully customizable, the FlowerCart contains enough inventory for multiple back-to-back and simultaneous cases without the need to re-stock. The inventory can be consolidated and standardized to best meet the needs of each individual facility.

- Right amount of product always available
- Fully customizable configuration
- Supports multiple cases in multiple ORs
- Reduces complexity of inventory management
- Decreases traffic in and out of the OR
- Caster swivel wheels for easy mobility





Ready-For-Surgery™ Solutions

Flex-Thread™ Distal Fibula Intramedullary Nail System

The Flex-Thread Distal Fibula Nail is an innovative solution for the treatment and fixation of fibula fractures and osteotomies.

System Features

Proximal Flex-Thread Design

- Provides secure point-contact fixation within the intramedullary canal
- Flexible nail shaft allows the implant to “flex” during insertion; self-contours to patient anatomy; facilitates entry point

Atraumatic Blunt Tip Nose

- Guides nail across fracture site
- Minimizes cortical disruption

Self Cutting & Self-Tapping Flutes

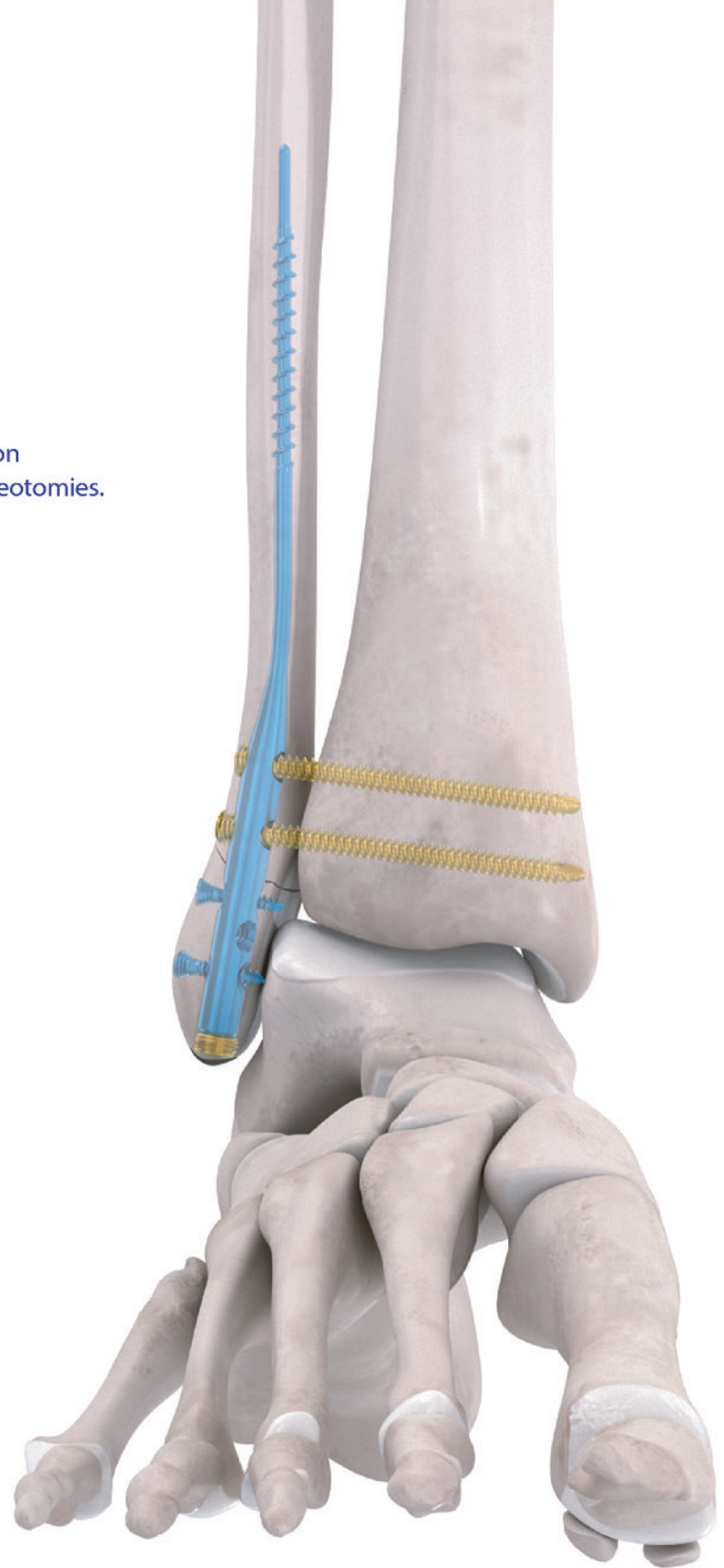
- No tapping required
- Decreases procedure time

Syndesmotic Versatility

- Nail accepts flexible (rope) or rigid (screw) fixation

ZERO Profile Distal Locking Screw

- ZERO Profile head design minimizes soft tissue irritation
- Threaded head engages fibula cortex for improved fixation



Flex-Thread Nail Sizes

Part #	Diameter	Length
8424-1-S	3.5mm	130mm
8424-3-S	3.5mm	180mm
8424-9-S	4.5mm	130mm
8424-11-S	4.5mm	180mm
8424-13-S	5.5mm	130mm
8424-15-S	5.5mm	180mm

INSTRUMENTS



Bone Reduction Forceps, 5", Pointed
8553-1



1.6mm x 12", Trocar / Spade Tip Guide Wire
8531-1



1.6mm / 6.3mm Soft Tissue Protector Sleeve
8532-1



1.6mm, K-Wire Offset Insert Sleeve
8544-1



1.6mm K-Wire Offset Sleeve with Handle
8538-1



Cannulated Reamers - AO Quick Connect
8528-1-S 3.2mm Cannulated Reamer
8789-1-S 4.2mm Cannulated Reamer
8796-1-S 5.2mm Cannulated Reamer



Cannulated Intramedullary Canal Template
8620-1-S: 3.5mm Nails
8620-2-S: 4.5mm Nails



6.3mm Cannulated Reamer,
AO Quick Connect
8527-1



Inserter Shaft
8435-1



Inserter Draw Rod
8439-1



Ratchet Inserter Handle, Blue
8437-1



Aiming Arm
8433-1



Reduction Device
8533-1



1.6mm / 6.3mm Locking Wire Sleeve
8535-1



1.6mm x 8", Trocar Tip K-Wire
8117-1



6.3mm Screw Sleeve
8534-1



2.0mm / 6.3mm Locking Drill Sleeve
8536-1



2.0mm x 175mm Calibrated Drill Bit,
AO Quick Connect
8529-1-S



T8 Screwdriver Shaft, Self-Retaining,
AO Quick Connect
8524-1-S



Screwdriver Handle, Black,
AO Quick Connect
8548-1



2.5mm / 6.3mm Locking Drill Sleeve
8537-1



2.5mm x 257mm Calibrated Drill Bit,
AO Quick Connect
8530-1-S



T15 Screwdriver Shaft, Self-Retaining,
AO Quick Connect
8526-1-S



3.7mm / 6.3mm Locking Drill Sleeve
8800-1



Constrictor Rope, 3.7mm Drill Bit
AB 2250



T25 Screwdriver Shaft, Self-Retaining,
AO Quick Connect
8555-1



Fracture Finger
8806-1

1.1mm x 22" Fracture Finger Guide Wire
8808-1



3.2mm Reamer Sleeve
8802-1



1.6mm K-Wire Stabilization Sleeve
8804-1

Removal Tool
EZO 135

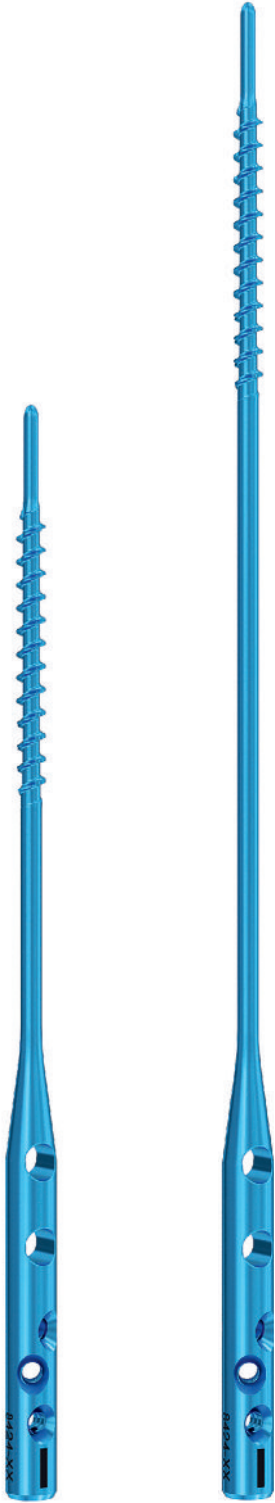
STERILE IMPLANTS

Nails

Flex-Thread Distal Fibula Nail,
3.5mm, Titanium

Flex-Thread Distal Fibula Nail,
4.5mm, Titanium

Flex-Thread Distal Fibula Nail,
5.5mm, Titanium



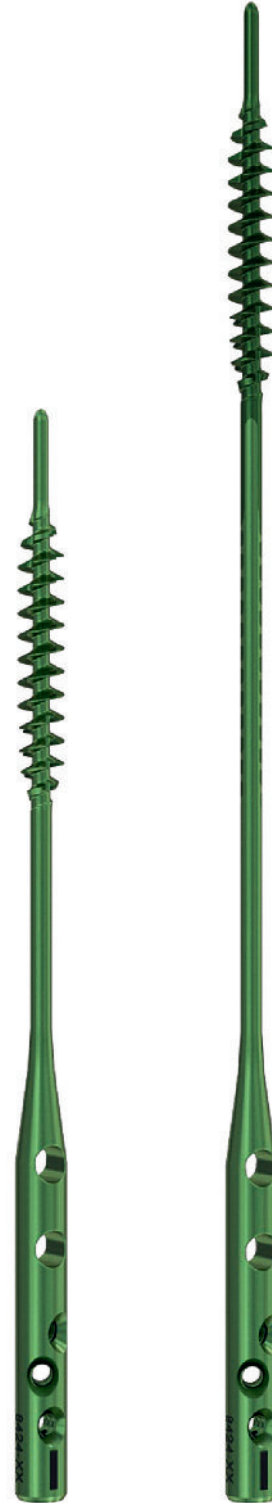
8424-1-S
130mm

8424-3-S
180mm



8424-9-S
130mm

8424-11-S
180mm



8424-13-S
130mm

8424-15-S
180mm

Screws



Flex-Thread 3.5mm Cortex Screws, T15
8428-XX-S*



Flex-Thread 3.5mm ZERO Profile Interlocking
Cortex Screws, T15
8525-XX-S*



Flex-Thread 2.7mm ZERO Profile Interlocking
Cortex Screws, T8
8426-XX-S*

End Caps



Flex-Thread End Cap, 10mm, T15
8522-2-S



Flex-Thread End Cap, 5mm, T15
8522-1-S



Flex-Thread End Cap, 3mm, T15
8522-3-S



Flex-Thread End Cap, 1mm, T8
8430-1-S

Flexible Syndesmosis Fixation

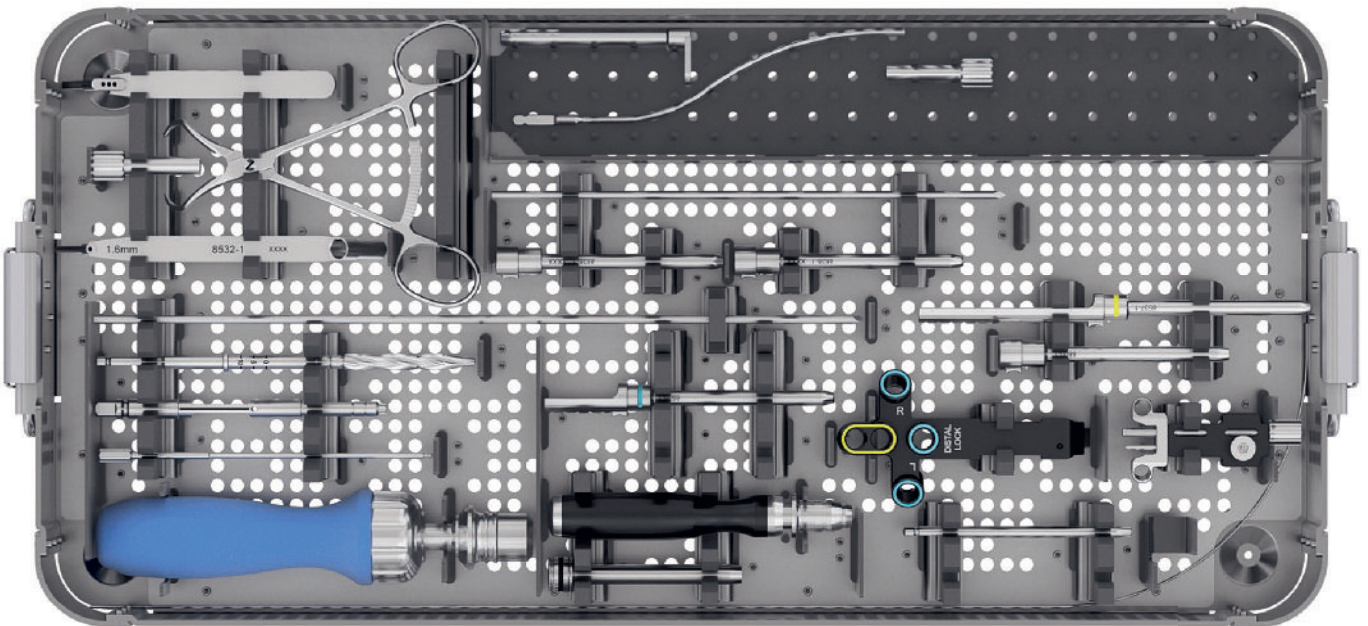


Constrictor Rope
DLF 002

FlowerCube™



Flex-Thread FlowerCube™



NAILS, SCREWS & END CAPS

Screws

Length (mm)	Flex-Thread ZERO Profile Interlocking Cortex Screws		Flex-Thread Cortex Screws
	2.7mm	3.5mm	3.5mm
10	8426-10-S	8525-10-S	8428-10-S
12	8426-12-S	8525-12-S	8428-12-S
14	8426-14-S	8525-14-S	8428-14-S
16	8426-16-S	8525-16-S	8428-16-S
18	8426-18-S	8525-18-S	8428-18-S
20	8426-20-S	8525-20-S	8428-20-S
22	8426-22-S	8525-22-S	8428-22-S
24	8426-24-S	8525-24-S	8428-24-S
26	8426-26-S	8525-26-S	8428-26-S
28	8426-28-S	8525-28-S	8428-28-S
30	8426-30-S	8525-30-S	8428-30-S
32		8525-32-S	8428-32-S
34		8525-34-S	8428-34-S
36		8525-36-S	8428-36-S
38		8525-38-S	8428-38-S
40		8525-40-S	8428-40-S
42		8525-42-S	8428-42-S
44		8525-44-S	8428-44-S
46		8525-46-S	8428-46-S
48		8525-48-S	8428-48-S
50		8525-50-S	8428-50-S
52		8525-52-S	8428-52-S
54		8525-54-S	8428-54-S
56		8525-56-S	8428-56-S
58		8525-58-S	8428-58-S
60		8525-60-S	8428-60-S
65		8525-65-S	8428-65-S
70		8525-70-S	8428-70-S

Nails

Flex-Thread Nails			
Length (mm)	3.5mm	4.5mm	5.5mm
130	8424-1-S	8424-9-S	8424-13-S
180	8424-3-S	8424-11-S	8424-15-S

End Caps

Flex-Thread End Caps		
Length (mm)		
1	T8	8430-1-S
3	T15	8522-3-S
5	T15	8522-1-S
10	T15	8522-2-S

SURGICAL EFFICIENCY STUDY

CLINICAL TRIAL DEMONSTRATES FLOWERCUBE® COST SAVINGS

PI: J. LEVIN, DPM

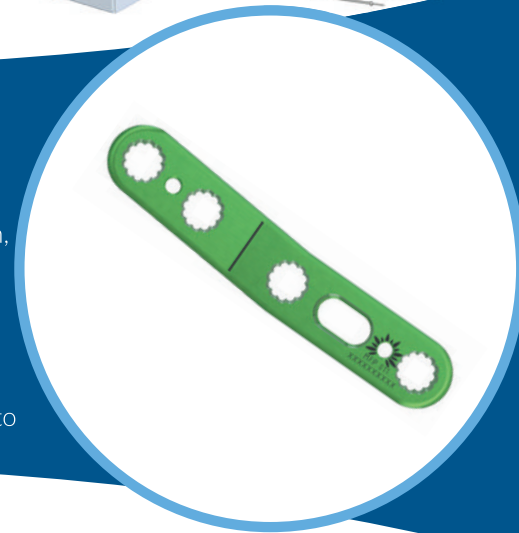
A clinical trial was conducted to analyze the clinical outcomes and economic impact of conducting first metatarsal phalangeal joint (MTP) arthrodesis procedures using the FlowerCube™ by Flower Orthopedics in hospital and ambulatory surgery center (ASC) settings. The FlowerCube™ is a unique, single-use, sterile, disposable implant and instrument system. Its use in this trial resulted in significant cost and time savings while delivering a fusion rate consistent with published literature.



BACKGROUND

Between February 2017 and April 2018, data was gathered from 71 consecutive patients undergoing MTP fusion to immobilize the first metatarsal phalangeal joint. Patients were followed for 12 weeks post-surgery and assessed with an x-ray to confirm successful fusion at eight and 12 weeks. Investigators evaluated complications, infection, union rates, indications for surgery, and secondary outcomes including cost data.

This is the first-known study to compare cost effectiveness and clinical outcomes of a single-use sterile system with a traditional orthopedic implant system. Implant costs are rarely covered by third-party payers in the ASC setting, but demonstrated cost savings associated with the FlowerCube™ could lead Medicare and other insurance companies to reconsider reimbursement.



CLINICAL RESULTS

Consistent with outcomes reported in prior literature, 84.51% of study patients experienced union of the joints by eight weeks post-surgery and 98.59% by 12 weeks post-surgery. No non-unions were recorded; however, one patient had a broken plate related to non-compliance and another developed an infection that resulted in hardware removal but went on to heal successfully. Full study data is on file with Conventus Flower Orthopedics.

SUMMARY

Using the FlowerCube™ results in significantly faster surgical cases, significantly lower third-party costs, and equivalent clinical outcomes.

ECONOMIC IMPACT AND COST ANALYSIS

Cost modeling suggests substantial savings in these areas:

- \$1,300 savings in third-party reimbursement costs for procedures performed at an ASC compared to those done in an outpatient hospital setting.
- 33% time savings representing nearly 20 minutes per case with the FlowerCube™ compared to procedures using traditional implants. FlowerCube™ cases were compared with CMS reported inprocedure time for CPT 28750.
- Surgical setting did not affect the procedure time.
- Sterilization, reprocessing, and packaging of surgical trays would add \$45 per instrument tray.

PRODUCT LIST

Plates

UPPER EXTREMITY

PRODUCT NO.	DESCRIPTION
FDR 001	Distal Radius Plate, Narrow, Left, 3 Holes
FDR 002	Distal Radius Plate, Narrow, Right, 3 Holes
FDR 011	Distal Radius Plate, Standard, Left, 3 Holes
FDR 012	Distal Radius Plate, Standard, Right, 3 Holes
FHF 305	Low Profile Straight Plate, 4 Holes
FHF 306	Low Profile Straight Plate, 6 Holes
FHF 308	Low Profile Straight Plate, 8 Holes
FHF 310	Low Profile Straight Plate, 4 Holes with Bar
FHF 315	Low Profile Straight Plate, 16 Holes
FHF 320	Low Profile L Plate, Right, 6 Holes
FHF 325	Low Profile L Plate (Left), 6 Holes
FHF 330	Low Profile Oblique T Plate, Right, 6 Holes
FHF 335	Low Profile Oblique T Plate, Left, 6 Holes
FHF 340	Low Profile T Plate, 6 Holes
FHF 345	Low Profile T Plate, 7 Holes
FHF 350	Low Profile H Plate, 2x2 Holes
FHF 355	Low Profile H Plate, 3x2 Holes
FHF 360	Low Profile H Plate, 4x2 Holes
FHF 365	Low Profile H Plate, 6x2 Holes
FMP 211	Four Corner Fusion Plate, 5 Holes
FMP 213	Four Corner Fusion Plate, 7 Holes
FRP 462	Proximal Humerus Plate, 9 Holes
FRP 463	Proximal Humerus Plate, 10 Holes
FRP 464	Proximal Humerus Plate, 11 Holes
FRP 465	Proximal Humerus Plate, 12 Holes
FRP 466	Proximal Humerus Plate, 13 Holes

LOWER EXTREMITY

PRODUCT NO.	DESCRIPTION
DAT 005	Distal Tibial A Plate, 5 Holes
DLF 006	Straight Locking Fibula Plate with Slot, 6 Holes
DLF 007	Straight Locking Fibula Plate with Slot, 7 Holes
DLF 008	Straight Locking Fibula Plate with Slot, 8 Holes
DLF 104	Anatomic Distal Fibula Plate, 4 Holes, Left
DLF 105	Anatomic Distal Fibula Plate, 5 Holes, Left
DLF 107	Anatomic Distal Fibula Plate, 7 Holes, Left
DLF 109	Anatomic Distal Fibula Plate, 9 Holes, Left
DLF 111	Anatomic Distal Fibula Plate, 11 Holes, Left
DLF 204	Anatomic Distal Fibula Plate, 4 Holes, Right
DLF 205	Anatomic Distal Fibula Plate, 5 Holes, Right
DLF 207	Anatomic Distal Fibula Plate, 7 Holes, Right
DLF 209	Anatomic Distal Fibula Plate, 9 Holes, Right
DLF 211	Anatomic Distal Fibula Plate, 11 Holes, Right
DLF 505	Straight Locking Fibula Plate, 5 Holes
DLF 506	Straight Locking Fibula Plate, 6 Holes
DLF 507	Straight Locking Fibula Plate, 7 Holes
DLF 508	Straight Locking Fibula Plate, 8 Holes
DLF 510	Straight Locking Fibula Plate, 10 Holes
DLT 107	Anterior Lateral Distal Tibial Plate, 7 Holes, Left
DLT 110	Anterior Lateral Distal Tibial Plate, 10 Holes, Left
DLT 207	Anterior Lateral Distal Tibial Plate, 7 Holes, Right
DLT 210	Anterior Lateral Distal Tibial Plate, 10 Holes, Right
DMT 308	Medial Distal Tibial Plate, 8 Holes, Left
DMT 310	Medial Distal Tibial Plate, 10 Holes, Left
DMT 408	Medial Distal Tibial Plate, 8 Holes, Right
DMT 410	Medial Distal Tibial Plate, 10 Holes, Right
FFP 001	TMT Plate, 5 Holes, Right
FFP 002	TMT Plate, 5 Holes, Left
FFP 021	NC Plate, Right
FFP 022	NC Plate, Left
FFP 071	Two Hole Locking Plate
FFP 072	Two Hole Compression Plate

LOWER EXTREMITY (CONTINUED)

PRODUCT NO.	DESCRIPTION
FFP 082	Low Profile Locking Plate, 2 Holes
FFP 083	Low Profile Locking Plate, 3 Holes
FFP 084	Low Profile Locking Plate, 4 Holes
FFP 085	Low Profile Locking Plate, 5 Holes
FFP 086	Low Profile Locking Plate, 6 Holes
FFP 087	Low Profile Locking Plate, 7 Holes
FFP 088	Low Profile Locking Plate, 8 Holes
FFP 094	Straight Plate with Slots, 4 Holes
FFP 095	Straight Plate with Slots, 5 Holes
FFP 096	Straight Plate with Slots, 6 Holes
FFP 107	Compression T-Plate, Oblique Left, 7 Holes
FFP 207	Compression T-Plate, Oblique Right, 7 Holes
FFP 302	Akin Plate, 2 Holes
FFP 306	Compression Y-Plate, 6 Holes
FFP 307	Compression Y-Plate, 7 Holes
FFP 317	Compression T-Plate, 7 Holes
FFP 318	Compression T-Plate, 8 Holes
FFP 617	XPlate, 17mm Long
FFP 618	XCompression Plate
FFP 622	XCompression Plate
FFP 405	Straight Plate, 4 Holes
FFP 406	Straight Plate, 6 Holes
FHF 408	Straight Plate, 8 Holes
FHF 410	Straight Plate, 4 Holes with Bar
FHF 415	Straight Plate, 16 Holes
FHF 420	L-Plate, Right, 6 Holes
FHF 425	L-Plate, Left, 6 Holes
FHF 430	Oblique T-Plate, Right, 6 Holes
FHF 435	Oblique T-Plate, Left, 6 Holes
FHF 440	T-Plate, 6 Holes
FHF 445	T-Plate, 7 Holes
FHF 450	H-Plate, 2x2 Holes
FHF 455	H-Plate, 3x2 Holes
FHF 460	H-Plate, 4x2 Holes
FHF 465	H-Plate, 6x2 Holes
FHF 932	12mm H-Plate, 5 Holes
FHF 934	14mm H-Plate, 5 Holes
FHF 936	16mm H-Plate, 6 Holes
FOW020	Opening Wedge Plate, 2mm
FOW030	Opening Wedge Plate, 3mm
FOW035	Opening Wedge Plate, 3.5mm
FOW040	Opening Wedge Plate, 4mm
FOW045	Opening Wedge Plate, 4.5mm
FOW050	Opening Wedge Plate, 5mm
FOW060	Opening Wedge Plate, 6mm
MCP 001	Medial Column Plate, Left
MCP 002	Medial Column Plate, Right
MFP 011	MTP Plate, 5 Holes, Right
MFP 012	MTP Plate, 5 Holes, Left
MFP 211	MTP Plate, 6 Holes, Right
MFP 212	MTP Plate, 6 Holes, Left
MFP 401	MTP Plate, Left
MFP 601	MTP Compression Plate, 7 Holes, Left
MFP 602	MTP Compression Plate, 7 Holes, Right
MFP 611	MTP Compression Plate, 7 Holes, Right
MFP 612	MTP Compression Plate, 7 Holes, Right
MFP 402	MTP Plate, Right
LFP 401	Lapidus Plate, Alpha
LFP 402	Lapidus Plate, Beta

Trials

PRODUCT NO.	DESCRIPTION
FDR 992	Distal Radius Plate Trials
FIM 460	Humerus Plate Trials
FIS 013	Four Corner Fusion Plate Trials
FIS 300	Small Bone Plate Trials
FIS 601	Angled & Inclined Plate Trials
FIS 602	Elongated L-Plate Trials
FIS 603	TMT Plate Trials
FIS 607	NC Plate Trials
FIS 610	Straight Plate with Slots Trials
FIS 611	XPlate Trials
FIS 612	Two Hole Plate Trials
FIS 613	Cannulated Reamer Trials
FIS 614	Lesser Metatarsal Plate Trials
FIS 615	Medial Column Plate Trials
FIS 616	Straight Plate Trials
FIS 621	MTP Plate Trials
FIS 622	Lapidus Plate Trials
FIS 623	Low Profile Locking Plate Trials
FIS 624	Opening Wedge Plate Trial
FIS 625	MTP Compression Plate Trials
FIS 650	Medial Distal Tibial Plate Trials
FIS 651	Anterior Lateral Distal Tibial Plate Trials
FIS 652	Straight Fibular Plate Trials
FIS 653	Anatomic Distal Fibular Plate Trials
FIS 654	Distal Tibial A-Plate Trials
FIS 657	Straight Locking Fibula Plate Trials
FIS 700	Low Profile Recon Plate & Recon Plate Trials, Medium
FIS 720	Low Profile Recon T-Plate Trials, Small
FIS 900	Recon Plate Trials, Small
FIS 920	Recon T-Plate Trials
FIS 930	H-Plate Trials

Cannulated & Headless Compression Screws

PARTIALLY THREADED

PRODUCT NO.	DESCRIPTION
CSP 008	Partially Threaded D:2.0mm x L:8mm
CSP 010	Partially Threaded D:2.0mm x L:10.0mm
CSP 012	Partially Threaded D:2.0mm x L:12.0mm
CSP 014	Partially Threaded D:2.0mm x L:14.0mm
CSP 015	Partially Threaded D:2.0mm x L:15.0mm
CSP 016	Partially Threaded D:2.0mm x L:16.0mm
CSP 018	Partially Threaded D:2.0mm x L:18.0mm
CSP 020	Partially Threaded D:2.0mm x L:20.0mm
CSP 022	Partially Threaded D:2.0mm x L:22.0mm
CSP 024	Partially Threaded D:2.0mm x L:24.0mm
CSP 108	Partially Threaded D:2.4mm x L:8mm
CSP 110	Partially Threaded D:2.4mm x L:10.0mm
CSP 112	Partially Threaded D:2.4mm x L:12.0mm
CSP 114	Partially Threaded D:2.4mm x L:14.0mm
CSP 115	Partially Threaded D:2.4mm x L:15.0mm
CSP 116	Partially Threaded D:2.4mm x L:16.0mm
CSP 118	Partially Threaded D:2.4mm x L:18.0mm
CSP 120	Partially Threaded D:2.4mm x L:20.0mm
CSP 122	Partially Threaded D:2.4mm x L:22.0mm
CSP 124	Partially Threaded D:2.4mm x L:24.0mm
CSP 126	Partially Threaded D:2.4mm x L:26.0mm
CSP 128	Partially Threaded D:2.4mm x L:28.0mm
CSP 130	Partially Threaded D:2.4mm x L:30.0mm
CSP 210	Partially Threaded D:3.0mm x L:10.0mm
CSP 212	Partially Threaded D:3.0mm x L:12.0mm
CSP 214	Partially Threaded D:3.0mm x L:14.0mm
CSP 216	Partially Threaded D:3.0mm x L:16.0mm
CSP 218	Partially Threaded D:3.0mm x L:18.0mm
CSP 220	Partially Threaded D:3.0mm x L:20.0mm
CSP 222	Partially Threaded D:3.0mm x L:22.0mm
CSP 224	Partially Threaded D:3.0mm x L:24.0mm
CSP 226	Partially Threaded D:3.0mm x L:26.0mm
CSP 228	Partially Threaded D:3.0mm x L:28.0mm
CSP 230	Partially Threaded D:3.0mm x L:30.0mm
CSP 232	Partially Threaded D:3.0mm x L:32.0mm
CSP 234	Partially Threaded D:3.0mm x L:34.0mm
CSP 236	Partially Threaded D:3.0mm x L:36.0mm
CSP 238	Partially Threaded D:3.0mm x L:38.0mm
CSP 240	Partially Threaded D:3.0mm x L:40.0mm
CSP 245	Partially Threaded D:3.0mm x L:45.0mm
CSP 250	Partially Threaded D:3.0mm x L:50.0mm
CSP 320	Partially Threaded D:3.5mm x L:20.0mm
CSP 322	Partially Threaded D:3.5mm x L:22.0mm
CSP 324	Partially Threaded D:3.5mm x L:24.0mm
CSP 325	Partially Threaded D:3.5mm x L:25.0mm
CSP 326	Partially Threaded D:3.5mm x L:26.0mm
CSP 328	Partially Threaded D:3.5mm x L:28.0mm
CSP 330	Partially Threaded D:3.5mm x L:30.0mm
CSP 332	Partially Threaded D:3.5mm x L:32.0mm
CSP 334	Partially Threaded D:3.5mm x L:34.0mm
CSP 336	Partially Threaded D:3.5mm x L:36.0mm
CSP 338	Partially Threaded D:3.5mm x L:38.0mm
CSP 340	Partially Threaded D:3.5mm x L:40.0mm
CSP 345	Partially Threaded D:3.5mm x L:45.0mm
CNP 416	Partially Threaded D:4.0mm x L:16.0mm
CNP 418	Partially Threaded D:4.0mm x L:18.0mm
CNP 420	Partially Threaded D:4.0mm x L:20.0mm
CNP 422	Partially Threaded D:4.0mm x L:22.0mm
CNP 424	Partially Threaded D:4.0mm x L:24.0mm
CNP 426	Partially Threaded D:4.0mm x L:26.0mm
CNP 428	Partially Threaded D:4.0mm x L:28.0mm
CNP 430	Partially Threaded D:4.0mm x L:30.0mm
CNP 432	Partially Threaded D:4.0mm x L:32.0mm
CNP 434	Partially Threaded D:4.0mm x L:34.0mm
CNP 436	Partially Threaded D:4.0mm x L:36.0mm
CNP 438	Partially Threaded D:4.0mm x L:38.0mm
CNP 440	Partially Threaded D:4.0mm x L:40.0mm
CNP 442	Partially Threaded D:4.0mm x L:42.0mm
CNP 444	Partially Threaded D:4.0mm x L:44.0mm

PARTIALLY THREADED (CONTINUED)

PRODUCT NO.	DESCRIPTION
CNP 445	Partially Threaded D:4.0mm x L:45.0mm
CNP 446	Partially Threaded D:4.0mm x L:46.0mm
CNP 448	Partially Threaded D:4.0mm x L:48.0mm
CNP 450	Partially Threaded D:4.0mm x L:50.0mm
CNP 455	Partially Threaded D:4.0mm x L:55.0mm
CNP 460	Partially Threaded D:4.0mm x L:60.0mm
CNP 530	Partially Threaded D:4.5mm x L:30.0mm
CNP 535	Partially Threaded D:4.5mm x L:35.0mm
CNP 540	Partially Threaded D:4.5mm x L:40.0mm
CNP 545	Partially Threaded D:4.5mm x L:45.0mm
CNP 550	Partially Threaded D:4.5mm x L:50.0mm
CNP 555	Partially Threaded D:4.5mm x L:55.0mm
CNP 560	Partially Threaded D:4.5mm x L:60.0mm
CNP 565	Partially Threaded D:4.5mm x L:65.0mm
CNP 570	Partially Threaded D:4.5mm x L:70.0mm
CSP 630	Partially Threaded D:5.5mm x L:30.0mm
CSP 635	Partially Threaded D:5.5mm x L:35.0mm
CSP 640	Partially Threaded D:5.5mm x L:40.0mm
CSP 645	Partially Threaded D:5.5mm x L:45.0mm
CSP 650	Partially Threaded D:5.5mm x L:50.0mm
CSP 655	Partially Threaded D:5.5mm x L:55.0mm
CSP 660	Partially Threaded D:5.5mm x L:60.0mm
CSP 665	Partially Threaded D:5.5mm x L:65.0mm
CSP 670	Partially Threaded D:5.5mm x L:70.0mm
CSP 740	Partially Threaded D:6.5mm x L:40.0mm
CSP 745	Partially Threaded D:6.5mm x L:45.0mm
CSP 750	Partially Threaded D:6.5mm x L:50.0mm
CSP 755	Partially Threaded D:6.5mm x L:55.0mm
CSP 760	Partially Threaded D:6.5mm x L:60.0mm
CSP 765	Partially Threaded D:6.5mm x L:65.0mm
CSP 770	Partially Threaded D:6.5mm x L:70.0mm
CSP 775	Partially Threaded D:6.5mm x L:75.0mm
CSP 780	Partially Threaded D:6.5mm x L:80.0mm
CSP 785	Partially Threaded D:6.5mm x L:85.0mm
CSP 790	Partially Threaded D:6.5mm x L:90.0mm
CSP 795	Partially Threaded D:6.5mm x L:95.0mm
CSP 796	Partially Threaded D:6.5mm x L:100.0mm
CSP 797	Partially Threaded D:6.5mm x L:110.0mm
CSP 798	Partially Threaded D:6.5mm x L:120.0mm
CSP 850	Partially Threaded D:7.3mm x L:50.0mm
CSP 855	Partially Threaded D:7.3mm x L:55.0mm
CSP 860	Partially Threaded D:7.3mm x L:60.0mm
CSP 865	Partially Threaded D:7.3mm x L:65.0mm
CSP 870	Partially Threaded D:7.3mm x L:70.0mm
CSP 875	Partially Threaded D:7.3mm x L:75.0mm
CSP 880	Partially Threaded D:7.3mm x L:80.0mm
CSP 885	Partially Threaded D:7.3mm x L:85.0mm
CSP 890	Partially Threaded D:7.3mm x L:90.0mm
CSP 895	Partially Threaded D:7.3mm x L:95.0mm
CSP 896	Partially Threaded D:7.3mm x L:100.0mm
CSP 897	Partially Threaded D:7.3mm x L:110.0mm
CSP 898	Partially Threaded D:7.3mm x L:120.0mm

FULLY THREADED

PRODUCT NO.	DESCRIPTION
CSF 215	Fully Threaded D:3.0mm x L:15.0mm
CSF 220	Fully Threaded D:3.0mm x L:20.0mm
CSF 225	Fully Threaded D:3.0mm x L:25.0mm
CSF 230	Fully Threaded D:3.0mm x L:30.0mm
CSF 235	Fully Threaded D:3.0mm x L:35.0mm
CSF 320	Fully Threaded D:3.5mm x L:20.0mm
CSF 325	Fully Threaded D:3.5mm x L:25.0mm
CSF 330	Fully Threaded D:3.5mm x L:30.0mm
CSF 335	Fully Threaded D:3.5mm x L:35.0mm
CSF 340	Fully Threaded D:3.5mm x L:40.0mm
CNF 530	Fully Threaded D:4.5mm x L:30.0mm
CNF 535	Fully Threaded D:4.5mm x L:35.0mm
CNF 540	Fully Threaded D:4.5mm x L:40.0mm
CNF 545	Fully Threaded D:4.5mm x L:45.0mm

continued

FULLY THREADED (CONTINUED)

PRODUCT NO.	DESCRIPTION
CNF 550	Fully Threaded D:4.5mm x L:50.0mm
CNF 555	Fully Threaded D:4.5mm x L:55.0mm
CNF 560	Fully Threaded D:4.5mm x L:60.0mm
CNF 565	Fully Threaded D:4.5mm x L:65.0mm
CNF 570	Fully Threaded D:4.5mm x L:70.0mm
CSF 740	Fully Threaded D:6.5mm x L:40mm
CSF 745	Fully Threaded D:6.5mm x L:45mm
CSF 750	Fully Threaded D:6.5mm x L:50mm
CSF 755	Fully Threaded D:6.5mm x L:55mm
CSF 760	Fully Threaded D:6.5mm x L:60mm
CSF 765	Fully Threaded D:6.5mm x L:65mm
CSF 770	Fully Threaded D:6.5mm x L:70mm
CSF 775	Fully Threaded D:6.5mm x L:75mm
CSF 780	Fully Threaded D:6.5mm x L:80mm

HEADLESS COMPRESSION

PRODUCT NO.	DESCRIPTION
HCS 106	Headless Compression Screw D:2.4mm x L:6mm
HCS 108	Headless Compression Screw D:2.4mm x L:8mm
HCS 110	Headless Compression Screw D:2.4mm x L:10mm
HCS 112	Headless Compression Screw D:2.4mm x L:12mm
HCS 114	Headless Compression Screw D:2.4mm x L:14mm
HCS 116	Headless Compression Screw D:2.4mm x L:16mm
HCS 118	Headless Compression Screw D:2.4mm x L:18mm
HCS 120	Headless Compression Screw D:2.4mm x L:20mm
HCS 122	Headless Compression Screw D:2.4mm x L:22mm
HCS 124	Headless Compression Screw D:2.4mm x L:24mm
HCS 126	Headless Compression Screw D:2.4mm x L:26mm
HCS 128	Headless Compression Screw D:2.4mm x L:28mm
HCS 132	Headless Compression Screw D:2.4mm x L:32mm
HCS 136	Headless Compression Screw D:2.4mm x L:36mm
HCS 140	Headless Compression Screw D:2.4mm x L:40mm
HCS 210	Headless Compression Screw D:3.0mm x L:10mm
HCS 212	Headless Compression Screw D:3.0mm x L:12mm
HCS 214	Headless Compression Screw D:3.0mm x L:14mm
HCS 216	Headless Compression Screw D:3.0mm x L:16mm
HCS 218	Headless Compression Screw D:3.0mm x L:18mm
HCS 220	Headless Compression Screw D:3.0mm x L:20mm
HCS 222	Headless Compression Screw D:3.0mm x L:22mm
HCS 224	Headless Compression Screw D:3.0mm x L:24mm
HCS 226	Headless Compression Screw D:3.0mm x L:26mm
HCS 228	Headless Compression Screw D:3.0mm x L:28mm
HCS 230	Headless Compression Screw D:3.0mm x L:30mm
HCS 232	Headless Compression Screw D:3.0mm x L:32mm
HCS 234	Headless Compression Screw D:3.0mm x L:34mm
HCS 236	Headless Compression Screw D:3.0mm x L:36mm
HCS 238	Headless Compression Screw D:3.0mm x L:38mm
HCS 240	Headless Compression Screw D:3.0mm x L:40mm
HCS 245	Headless Compression Screw D:3.0mm x L:45mm
HCS 250	Headless Compression Screw D:3.0mm x L:50mm
HCS 414	Headless Compression Screw D:4.0mm x L:14mm
HCS 416	Headless Compression Screw D:4.0mm x L:16mm
HCS 418	Headless Compression Screw D:4.0mm x L:18mm
HCS 420	Headless Compression Screw D:4.0mm x L:20mm
HCS 422	Headless Compression Screw D:4.0mm x L:22mm
HCS 424	Headless Compression Screw D:4.0mm x L:24mm
HCS 426	Headless Compression Screw D:4.0mm x L:26mm
HCS 428	Headless Compression Screw D:4.0mm x L:28mm
HCS 430	Headless Compression Screw D:4.0mm x L:30mm
HCS 432	Headless Compression Screw D:4.0mm x L:32mm
HCS 434	Headless Compression Screw D:4.0mm x L:34mm
HCS 436	Headless Compression Screw D:4.0mm x L:36mm
HCS 438	Headless Compression Screw D:4.0mm x L:38mm
HCS 440	Headless Compression Screw D:4.0mm x L:40mm
HCS 445	Headless Compression Screw D:4.0mm x L:45mm
HCS 450	Headless Compression Screw D:4.0mm x L:50mm
HCS 455	Headless Compression Screw D:4.0mm x L:55mm
HCS 460	Headless Compression Screw D:4.0mm x L:60mm

HEADLESS COMPRESSION (CONTINUED)

PRODUCT NO.	DESCRIPTION
HCS 530	Headless Compression Screw D:5.0mm x L:30mm
HCS 532	Headless Compression Screw D:5.0mm x L:32mm
HCS 534	Headless Compression Screw D:5.0mm x L:34mm
HCS 536	Headless Compression Screw D:5.0mm x L:36mm
HCS 538	Headless Compression Screw D:5.0mm x L:38mm
HCS 540	Headless Compression Screw D:5.0mm x L:40mm
HCS 542	Headless Compression Screw D:5.0mm x L:42mm
HCS 544	Headless Compression Screw D:5.0mm x L:44mm
HCS 546	Headless Compression Screw D:5.0mm x L:46mm
HCS 548	Headless Compression Screw D:5.0mm x L:48mm
HCS 550	Headless Compression Screw D:5.0mm x L:50mm
HCS 555	Headless Compression Screw D:5.0mm x L:55mm
HCS 560	Headless Compression Screw D:5.0mm x L:60mm
HCS 565	Headless Compression Screw D:5.0mm x L:65mm
HCS 570	Headless Compression Screw D:5.0mm x L:70mm
HCS 610	Headless Compression Screw D:3.0mm x L:10mm
HCS 612	Headless Compression Screw D:3.0mm x L:12mm
HCS 614	Headless Compression Screw D:3.0mm x L:14mm
HCS 616	Headless Compression Screw D:3.0mm x L:16mm
HCS 618	Headless Compression Screw D:3.0mm x L:18mm
HCS 620	Headless Compression Screw D:3.0mm x L:20mm
HCS 740	Headless Compression Screw D:6.5mm x L:40mm
HCS 745	Headless Compression Screw D:6.5mm x L:45mm
HCS 750	Headless Compression Screw D:6.5mm x L:50mm
HCS 755	Headless Compression Screw D:6.5mm x L:55mm
HCS 760	Headless Compression Screw D:6.5mm x L:60mm
HCS 765	Headless Compression Screw D:6.5mm x L:65mm
HCS 770	Headless Compression Screw D:6.5mm x L:70mm
HCS 775	Headless Compression Screw D:6.5mm x L:75mm
HCS 780	Headless Compression Screw D:6.5mm x L:80mm
HCS 785	Headless Compression Screw D:6.5mm x L:85mm
HCS 790	Headless Compression Screw D:6.5mm x L:90mm
HCS 791	Headless Compression Screw D:6.5mm x L:95mm
HCS 792	Headless Compression Screw D:6.5mm x L:100mm

Jones Screws

PRODUCT NO.	DESCRIPTION
FJS 135	Jones Screw, Short Thread D:4.5mm x L:35mm
FJS 140	Jones Screw, Short Thread D:4.5mm x L:40mm
FJS 145	Jones Screw, Short Thread D:4.5mm x L:45mm
FJS 150	Jones Screw, Short Thread D:4.5mm x L:50mm
FJS 155	Jones Screw, Short Thread D:4.5mm x L:55mm
FJS 160	Jones Screw, Short Thread D:4.5mm x L:60mm
FJS 165	Jones Screw, Short Thread D:4.5mm x L:65mm
FJS 230	Jones Screw, Short Thread D:5.5mm x L:30mm
FJS 235	Jones Screw, Short Thread D:5.5mm x L:35mm
FJS 240	Jones Screw, Short Thread D:5.5mm x L:40mm
FJS 245	Jones Screw, Short Thread D:5.5mm x L:45mm
FJS 250	Jones Screw, Short Thread D:5.5mm x L:50mm
FJS 255	Jones Screw, Short Thread D:5.5mm x L:55mm
FJS 260	Jones Screw, Short Thread D:5.5mm x L:60mm
FJS 265	Jones Screw, Short Thread D:5.5mm x L:65mm
FJS 530	Jones Screw D:4.5mm x L:30mm
FJS 535	Jones Screw D:4.5mm x L:35mm
FJS 540	Jones Screw D:4.5mm x L:40mm
FJS 545	Jones Screw D:4.5mm x L:45mm
FJS 550	Jones Screw D:4.5mm x L:50mm
FJS 555	Jones Screw D:4.5mm x L:55mm
FJS 560	Jones Screw D:4.5mm x L:60mm
FJS 565	Jones Screw D:4.5mm x L:65mm
FJS 570	Jones Screw D:4.5mm x L:70mm
FJS 575	Jones Screw D:4.5mm x L:75mm
FJS 580	Jones Screw D:4.5mm x L:80mm
FJS 630	Jones Screw D:5.5mm x L:30mm
FJS 635	Jones Screw D:5.5mm x L:35mm
FJS 640	Jones Screw D:5.5mm x L:40mm
FJS 645	Jones Screw D:5.5mm x L:45mm
FJS 650	Jones Screw D:5.5mm x L:50mm
FJS 655	Jones Screw D:5.5mm x L:55mm
FJS 660	Jones Screw D:5.5mm x L:60mm
FJS 665	Jones Screw D:5.5mm x L:65mm
FJS 670	Jones Screw D:5.5mm x L:70mm
FJS 675	Jones Screw D:5.5mm x L:75mm
FJS 680	Jones Screw D:5.5mm x L:80mm

COMPRESSION

PRODUCT NO.	DESCRIPTION
FCS406	Variable Angle Compression, D:2.4mm x L:6.0mm
FCS408	Variable Angle Compression, D:2.4mm x L:8.0mm
FCS410	Variable Angle Compression, D:2.4mm x L:10.0mm
FCS412	Variable Angle Compression, D:2.4mm x L:12.0mm
FCS414	Variable Angle Compression, D:2.4mm x L:14.0mm
FCS416	Variable Angle Compression, D:2.4mm x L:16.0mm
FCS418	Variable Angle Compression, D:2.4mm x L:18.0mm
FCS420	Variable Angle Compression, D:2.4mm x L:20.0mm
FCS422	Variable Angle Compression, D:2.4mm x L:22.0mm
FCS210	Variable Angle Compression, D:2.7mm x L: 10mm
FCS212	Variable Angle Compression, D:2.7mm x L: 12mm
FCS214	Variable Angle Compression, D:2.7mm x L: 14mm
FCS216	Variable Angle Compression, D:2.7mm x L: 16mm
FCS218	Variable Angle Compression, D:2.7mm x L: 18mm
FCS220	Variable Angle Compression, D:2.7mm x L: 20mm
FCS222	Variable Angle Compression, D:2.7mm x L: 22mm
FCS224	Variable Angle Compression, D:2.7mm x L: 24mm
FCS226	Variable Angle Compression, D:2.7mm x L: 26mm
FCS510	Variable Angle Compression, D:3.5mm x L:10mm
FCS512	Variable Angle Compression, D:3.5mm x L:12mm
FCS514	Variable Angle Compression, D:3.5mm x L:14mm
FCS516	Variable Angle Compression, D:3.5mm x L:16mm
FCS518	Variable Angle Compression, D:3.5mm x L:18mm
FCS520	Variable Angle Compression, D:3.5mm x L:20mm
FCS522	Variable Angle Compression, D:3.5mm x L:22mm
FCS524	Variable Angle Compression, D:3.5mm x L:24mm
FCS526	Variable Angle Compression, D:3.5mm x L:26mm
FCS528	Variable Angle Compression, D:3.5mm x L:28mm
FCS530	Variable Angle Compression, D:3.5mm x L:30.0mm
FCS532	Variable Angle Compression, D:3.5mm x L:32.0mm
FCS534	Variable Angle Compression, D:3.5mm x L:34.0mm
FCS536	Variable Angle Compression, D:3.5mm x L:36.0mm
FCS538	Variable Angle Compression, D:3.5mm x L:38.0mm
FCS540	Variable Angle Compression, D:3.5mm x L:40.0mm
FCS610	Variable Angle Compression, D:4.0mm x L:10.0mm
FCS612	Variable Angle Compression, D:4.0mm x L:12.0mm
FCS614	Variable Angle Compression, D:4.0mm x L:14.0mm
FCS616	Variable Angle Compression, D:4.0mm x L:16.0mm
FCS618	Variable Angle Compression, D:4.0mm x L:18.0mm
FCS620	Variable Angle Compression, D:4.0mm x L:20.0mm
FCS622	Variable Angle Compression, D:4.0mm x L:22.0mm
FCS624	Variable Angle Compression, D:4.0mm x L:24.0mm
FCS626	Variable Angle Compression, D:4.0mm x L:26.0mm
FCS628	Variable Angle Compression, D:4.0mm x L:28.0mm
FCS630	Variable Angle Compression, D:4.0mm x L:30.0mm
FCS632	Variable Angle Compression, D:4.0mm x L:32.0mm
FCS634	Variable Angle Compression, D:4.0mm x L:34.0mm
FCS636	Variable Angle Compression, D:4.0mm x L:36.0mm
FCS638	Variable Angle Compression, D:4.0mm x L:38.0mm
FCS640	Variable Angle Compression, D:4.0mm x L:40.0mm
FCS645	Variable Angle Compression, D:4.0mm x L:45.0mm
FCS650	Variable Angle Compression, D:4.0mm x L:50.0mm
FCS655	Variable Angle Compression, D:4.0mm x L:55.0mm
FCS660	Variable Angle Compression, D:4.0mm x L:60.0mm

Instrument Kits

PRODUCT NO.	DESCRIPTION
AGB901	Cotton Trial, Tamp, 1.6mm x 140mm K-Wire
AGB902	Evans Trial, Tamp, 1.6mm x 140mm K-Wire
EWK201	Flower E -Kit Advanced
FIM015	Power Driver G-Wire Kit, 3.0-4.5mm Cannulated Screws
FIM025	Power Driver G-Wire Kit, 5.5-7.3mm Cannulated Screws
FIM115	Large Bone K-Wire Kit, 1.4mm K-Wires
GWK100	Guide Wire Kit, 2.0/2.4
GWK108	CoCr Guidewires 0.8mm x 160mm (2)
GWK111	CoCr Guidewires 1.1mm x 160mm (2)
GWK120	Guidewires 2.0mm x 160mm (2)
GWK122	Guide Wires, 2.0mm x 160mm (1)
GWK125	CoCr Guide Wires, 1.25mm x 160mm (2)
GWK200	Guide Wire Kit, 3.0/3.5/4.0/4.5
GWK300	Guide Wire Kit, 5.5/6.5/7.3
KWK100	K-Wire Kit, Small Plates
KWK102	K-Wires 1.4mm x 1.40mm (2)
KWK901	Distal Radius K-Wire Kit, Advanced
OWK201	Olive Wire Kit, Medium, Advanced

Drill Bit

PRODUCT NO.	DESCRIPTION
DBK015	1.1mm Drill Bit for 1.5mm Screws
DBK020	1.5mm Drill Bit for 2.0mm Screws
DBK024	1.8mm Drill Bit for 2.4mm Screws
DBK027	2.0mm Drill Bit for 2.7mm Screws
DBK030	2.0mm Drill Bit for 3.0mm Screws
DBK135	2.5mm Drill Bit for 3.5mm Screws
DBK040	3.0mm Drill Bit for 4.0mm Screws
FDR991	1.8mm Drill Bit for 2.4mm Screws - Distal Radius
LSK015	1.5mm Drill Bit for 1.5mm Lag Screws
LSK020	2.0mm Drill Bit for 2.0mm Lag Screws
LSK030	3.0mm Drill Bit for 3.0mm Lag Screws
LSK035	3.5mm Drill Bit for 3.5mm Lag Screws
LSK040	4.0mm Drill Bit for 4.0mm Lag Screws
LSK124	2.5mm Drill Bit for 2.5mm Lag Screws
LSK127	2.7mm Drill Bit for 2.7mm Lag Screws
CDB017	1.7mm Cannulated Drill Bit for 2.0/2.4mm Cann. Screws
CDB020	2.0mm Cannulated Drill Bit for 3.0mm Cann. Screws
CDB024	2.4mm Cannulated Drill Bit for 3.5mm Cann. Screws
CDB026	2.6mm Cannulated Drill Bit for 4.0mm Cann. Screws
CDB030	3.0mm Cannulated Drill Bit for 4.5mm Cann. Screws
CDB035	3.5mm Cannulated Drill Bit for 5.0mm Screws
CDB040	4.0mm Cannulated Drill Bit for 5.5mm Cann. Screws
CDB050	5.0mm Cannulated Drill Bit for 6.5/7.3mm Cann. Screws
CDB065	6.5mm Cannulated Drill Bit for 6.5mm Full Cann. Screws

Ancillary Instruments

PRODUCT NO.	DESCRIPTION
CRK018	Cannulated Reamer Kit, 18mm
CRK021	Cannulated Reamer Kit, 21mm
CRK024	Cannulated Reamer Kit, 24mm
FIM234	Plate Benders (M) (2)
FIS204	Four Corner Fusion Reamer
FIS231	Plate Benders (S) (2)
RMD100	T6 Screwdriver
RMD200	T15 Screwdriver
RMD300	T25 Screwdriver

Constrictor® Rope Syndesmosis Repair Kit

PRODUCT NO.	DESCRIPTION
DLF 002	Constrictor® Rope Syndesmosis Repair Kit

FlowerToe™ Cannulated

PRODUCT NO.	DESCRIPTION
FHT 200	FlowerToe, Cannulated, 2.0mm diameter, 13mm length
FHT 250	FlowerToe, Cannulated, 2.5mm diameter, 15mm length

FlowerToe™ Solid

PRODUCT NO.	DESCRIPTION
FHT 202	FlowerToe, Solid, 2.0mm diameter, 13mm length
FHT 252	FlowerToe, Solid, 2.5mm diameter, 15mm length

FlowerToe™ Instruments

PRODUCT NO.	DESCRIPTION
FHT 509	O Handle with 0.9mm Guidewire Kit
FHT 511	AO Handle with 1.1mm Guidewire Kit

Washers

PRODUCT NO.	DESCRIPTION
OSW 100	Screw Washer for 3.5mm/4.0mm/4.5mm Screws
OSW 200	Screw Washer for 5.5mm/6.5mm/7.3mm Screws

FlowerGraft™

BICORTICAL, PRESHAPED ALLOGRAFTS

PRODUCT NO.	DESCRIPTION
AGB 106	Bi-cortical Preshaped Evans Allograft, 6 mm
AGB 108	Bi-cortical Preshaped Evans Allograft, 8 mm
AGB 110	Bi-cortical Preshaped Evans Allograft, 10mm
AGB 112	Bi-cortical Preshaped Evans Allograft, 12mm
AGB 305	Bi-cortical Preshaped Cotton Allograft, 5 mm
AGB 306	Bi-cortical Preshaped Cotton Allograft, 6m
AGB 307	Bi-cortical Preshaped Cotton Allograft, 7 mm
AGB 308	Bi-cortical Preshaped Cotton Allograft, 8 mm

EVANS PLATES

PRODUCT NO.	DESCRIPTION
AGB 116	Evans Plate, 16mm, Left
AGB 216	Evans Plate, 16mm, Right
AGB 120	Evans Plate, 20mm, Left
AGB 220	Evans Plate, 20mm, Right

Flower Biologics

PRODUCT NO.	DESCRIPTION
FBP 204	FlowerPatch 2x4cm
FBP 404	FlowerPatch 4x4cm
FBP 406	FlowerPatch 4x6cm
FBP 408	FlowerPatch 4x8cm
FDM 204	FlowerDerm Allograft, Medium, 2x4 cm
FDM 404	FlowerDerm Allograft, Medium, 4x4 cm
FDM 408	FlowerDerm Allograft, Medium, 4x8 cm
FDM 412	FlowerDerm Allograft, Medium, 4x12 cm
FDM 555	FlowerDerm Allograft, Thin Meshed, 5X5 cm
TAG® 256	2.56x2.56cm
TAG® 414	4x4cm

INDICATIONS FOR USE: The Flower Small and Medium Implants set is intended for use for internal fixation of fractures and reconstruction of bones, including the scapula, olecranon, humerus, radius, ulna, pelvis, distal tibia, fibula, hand and foot in adults and for long bone in adolescents (1221) in whom the growth plates have fused. Examples of these internal fixations and reconstructions include compression fractures, intra-articular and extra-articular fractures, displaced fractures, osteotomies, non-unions and mal-unions. This system can be used for palmar, ventral, dorsal or orthogonal application.

INDICATIONS FOR USE: The Flower Ankle Plating Set is intended for use for fixation of the ankle in adults and adolescents (1221) in whom the growth plates have fused, and particularly in osteopenic bone. Specifically,

- Distal Medial and Lateral Tibia plates are intended for fixation of osteotomies, fractures, nonunions, and replantations of bones and bone fragments of the diaphyseal and metaphyseal regions of the distal tibia.
- Distal Tibia APlates are intended to buttress partial articular fractures and bone fragments of the distal tibia.
- Straight and Distal Lateral Fibula Plates are intended for fixation of osteotomies, fractures, nonunions, malunions, and replantations of bones and bone fragments of the diaphyseal and metaphyseal regions of the distal fibula.

INDICATIONS FOR USE: The Flower Orthopedics Flower Bone Screws set is intended to be used for the fixation of bone fractures, fusion of joints or bone reconstruction.

INDICATIONS FOR USE: The Flower Upper Extremity Plating Set is intended to be used for fixation of fractures, fusions, or osteotomies of the clavicle, humerus, radius and ulna.

INDICATIONS FOR USE: The Flower Rearfoot Plating Set is intended to be used for internal fixation of fractures and reconstruction of bones of the rearfoot, including the calcaneus. Examples of these internal fixations and reconstructions include, but are not limited to extraarticular fractures, intra-articular fractures, joint depression fractures, tongue type fractures, severely comminuted fractures and osteotomies.

INDICATIONS FOR USE: The Flex-Thread™ Distal Fibula Intramedullary Nail System is intended for use in the fixation of fibula fractures and osteotomies.

INDICATIONS FOR USE: The Conventus Flower SnapFix Screw is indicated for use in bone reconstruction, osteotomy, arthrodesis, joint fusion, fracture repair, and fracture fixation of bones appropriate for the size of the device. Screws are intended for single use only.

INDICATIONS FOR USE: The FlowerToe™ System implant is indicated for use in bone reconstruction, osteotomy, arthrodesis, joint fusion appropriate for the size of the device. Screws are intended for single use only.

INDICATIONS FOR USE: The Dunamis Fixation Button System is to be used for fixation of bone to bone or soft tissue to bone. The components are intended to serve as fixation posts, a distribution bridge, or for distributing suture tension over an area of ligament or tendon repair. Specifically, the Dunamis Fixation Button System is intended for use in the fixation of bone and soft tissue in orthopaedic procedures requiring ligament or tendon repair/reconstruction, including providing fixation during the healing process following acromioclavicular separations, as an adjunct to fracture repair in syndesmotric trauma, and ACL and PCL repair.

(c) 2022 Conventus Flower Orthopedics. All rights reserved. FlowerCube™, FlowerCarriage™, EKit™, FlowerCart™, FlowerGraft™, ReadyForSurgery™, FlowerPatch™, FlowerDerm™, TAG™, Flex-Thread™, and FlowerToe™ are trademarks of Conventus Flower Orthopedics. Please refer to package insert for description, indications, contraindications, warnings, precautions, and other important information. Constrictor® is a registered trademark of Dunamis Medical.

THE MARKET LEADER IN STERILE
READY-FOR-SURGERY™
SOLUTIONS

Conventus Flower Orthopedics
100 Witmer Road, Suite 280
Horsham, PA 19044
T: 877.778.8587
FlowerOrtho.com

©2022 Conventus Flower Orthopedics. All rights reserved.



FOC 1025 Rev E 04/22